

LOC/DME I-RKS
109.3
Chan **30**

APP CRS
270°

Rwy Idg
TDZE **6765**
Apt Elev **6765**

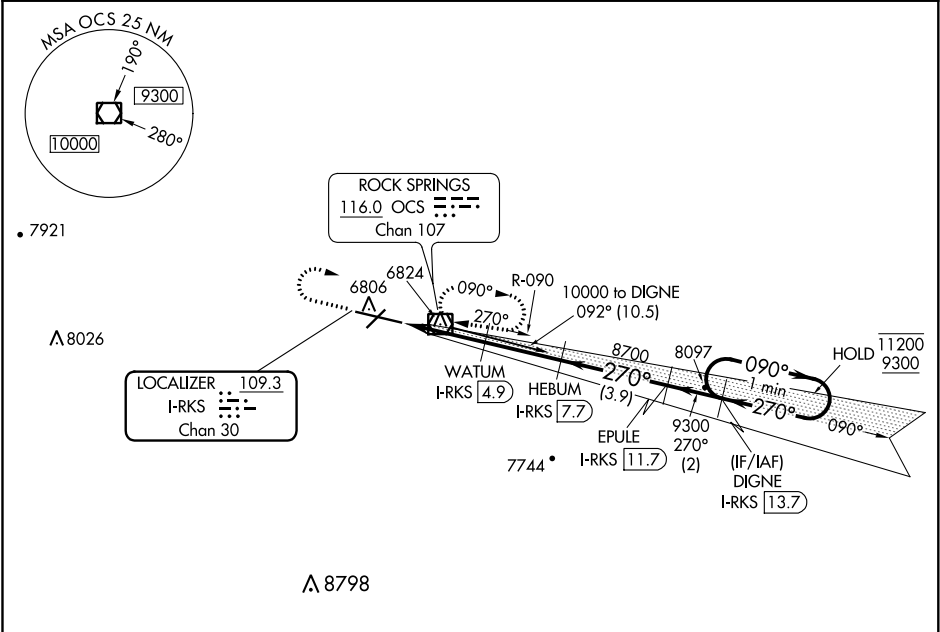
ILS or LOC RWY 27
SOUTHWEST WYOMING RGNL (RKS)

DME required.

MALSR

MISSED APPROACH: Climb to 7600 then climbing right turn to 9300 direct OCS VOR/DME and hold, continue climb-in-hold to 9300.

ASOS 118.375	SALT LAKE CENTER 124.35 353.5	UNICOM 122.8 (CTAF) 0
------------------------	---	---------------------------------



ELEV 6765	D	TDZE 6765
-----------	----------	-----------

7600	9300	OCS	Use I-RKS DME when on the localizer course.
*LOC only.	HEBUM I-RKS 7.7	EPULE I-RKS 11.7	DIGNE I-RKS 13.7
*I-RKS 1.8	WATUM I-RKS 4.9	8700	9300
0.9	2.2 NM	2.8 NM	3.9 NM
2 NM	One Minute Holding Pattern		
090°	270°	090°	11200
270°	9300	270°	9300
GS 3.00°			TCH 55

CATEGORY	A	B	C	D
S-ILS-27	6965-½		200 (200-½)	
S-LOC 27	7100-½		335 (400-½)	
C CIRCLING	7140-1 375 (400-1)	7220-1 455 (500-1)	7220-1½ 455 (500-1½)	7540-2½ 775 (800-2½)