

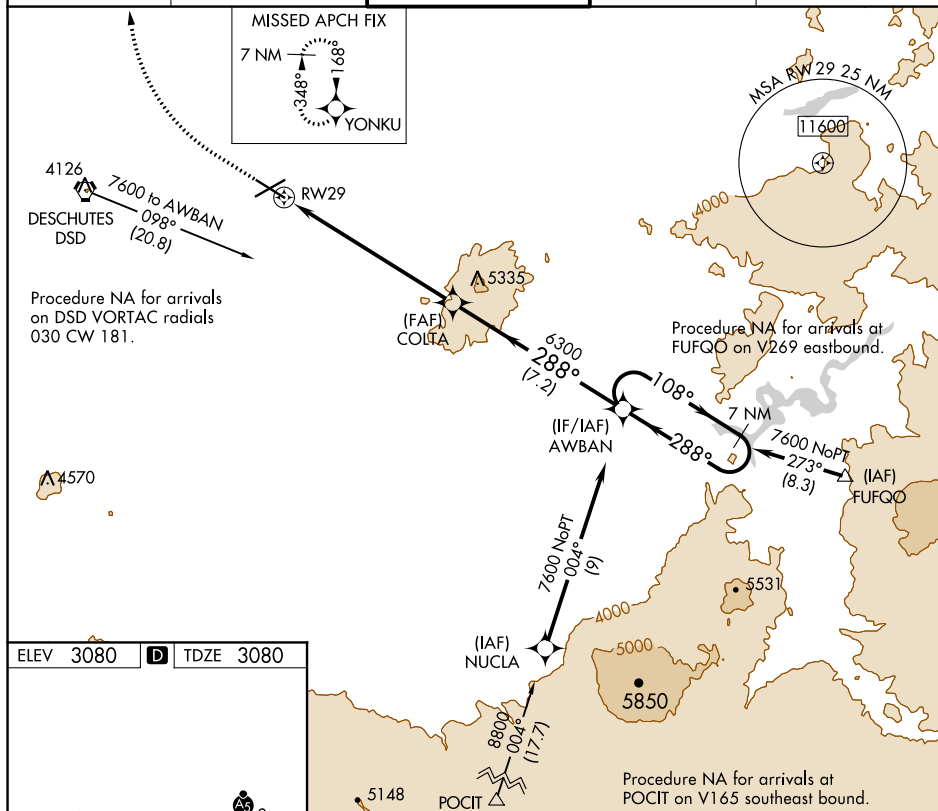
WAAS CH 90214 W29A	APP CRS 288°	Rwy Idg TDZE Apt Elev	7006 3080 3080
--	------------------------	-----------------------------	---

RNAV (GPS) Z RWY 29
ROBERTS FIELD (RDM)

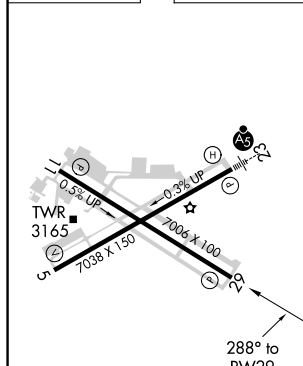
T For uncompensated Baro-VNAV systems, LNAV/VNAV NA below -20°C (-4°F) or above 43°C (110°F).
DME/DME RNP-0.3 NA.

MISSED APPROACH: Climb to 4000 then climbing right turn to 7000 direct YONKU and hold, continue climb-in-hold to 7000.

ATIS 119.025	SEATTLE CENTER 126.15 269.475	REDMOND TOWER★ 124.5 (CTAF) 0 256.8	GND CON 121.8	UNICOM 122.95
------------------------	---	---	-------------------------	-------------------------



ELEV 3080	D	TDZE 3080
-----------	----------	-----------



REIL Rwy 5, 11 and 29 **L**
HIRL Rwy 5-23 **L**
MIRL Rwy 11-29 **L**

4000 ↑ 7000 ↗ YONKU ✨

VGSI and RNAV glidepath not coincident (VGSI Angle 3.00/TCH 50).

7 NM Holding Pattern

108° → 288° ← 7600

RW29

COLTA 6300

AWBAN

288°

6300

GP 4.20° TCH 43

7.1 NM 7.2 NM

CATEGORY	A	B	C	D
LPV DA	3366-1	286 (300-1)		NA
LNNAV/ VNNAV DA	3366-1	286 (300-1)		NA