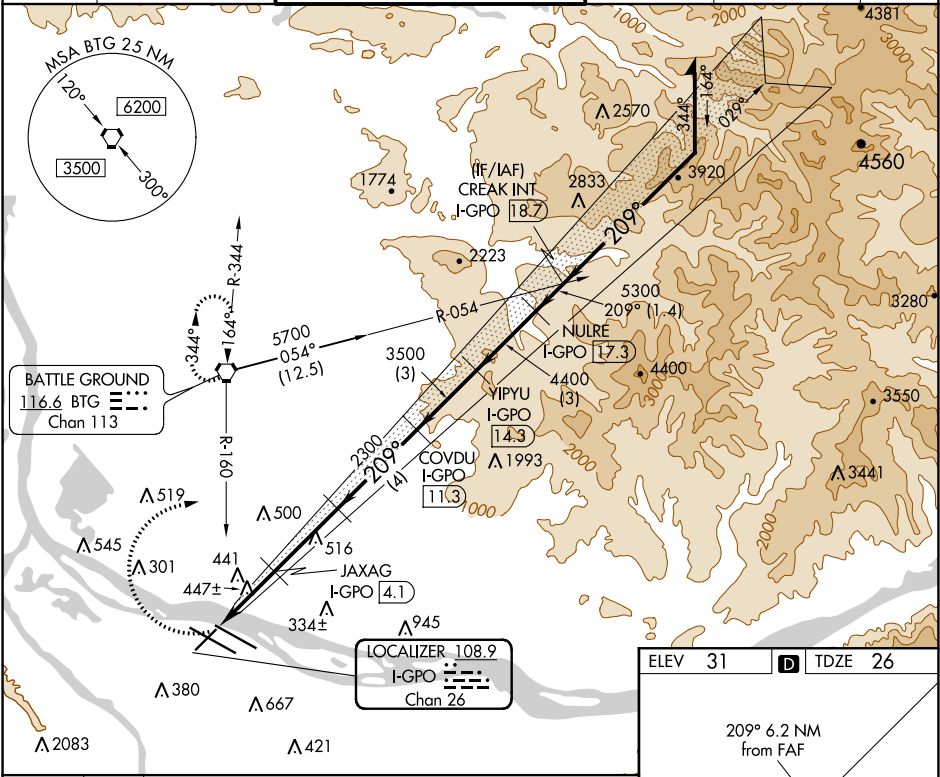



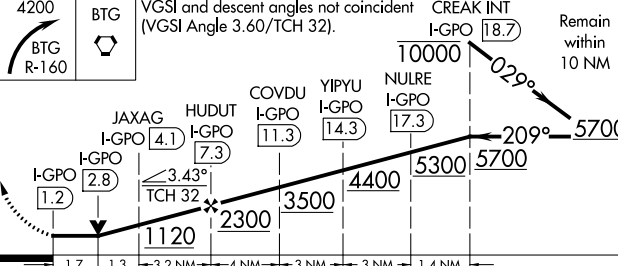

LOC/DME I-GPO	APP CRS	Rwy Idg	6000
108.9	209°	TDZE	26
Chan 26		Apt Elev	31

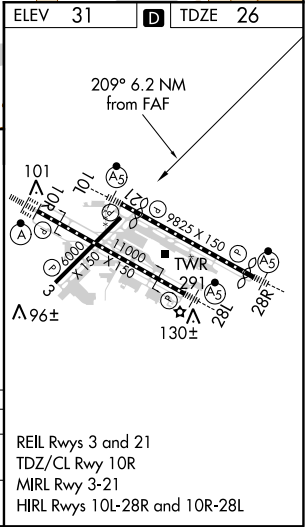
LOC/DME RWY 21
PORTLAND INTL (PDX)

▼ ▲ Helicopter visibility reduction below ¾ SM NA.	MISSED APPROACH: Climbing right turn to 4200 on BTG VORTAC R-160 to BTG VORTAC and hold, continue climb-in-hold to 4200.
---	--

D-ATIS 128.35 269.9	PORTLAND APP CON 124.35 299.2	PORTLAND TOWER Rwy 10L-28R 118.7 257.8 Rwys 3-21, 10R-28L 123.775 251.125	GND CON 121.9 348.6	CLNC DEL 120.125 318.1	CPDLC
---------------------------	----------------------------------	---	------------------------	---------------------------	-------



4200 BTG BTG R-160	BTG 	VGSI and descent angles not coincident (VGSI Angle 3.60/TCH 32).		CREAK INT I-GPO 18.7	Remain within 10 NM
					
CATEGORY	A	B	C	D	
S-21	700-1	674 (700-1)	700-1 7/8	674 (700-1 7/8)	
 CIRCLING	720-1 689 (700-1)	760-1 729 (800-1)	1060-3	1029 (1100-3)	



NW-1, 31 DEC 2020 to 28 JAN 2021

NW-1, 31 DEC 2020 to 28 JAN 2021