

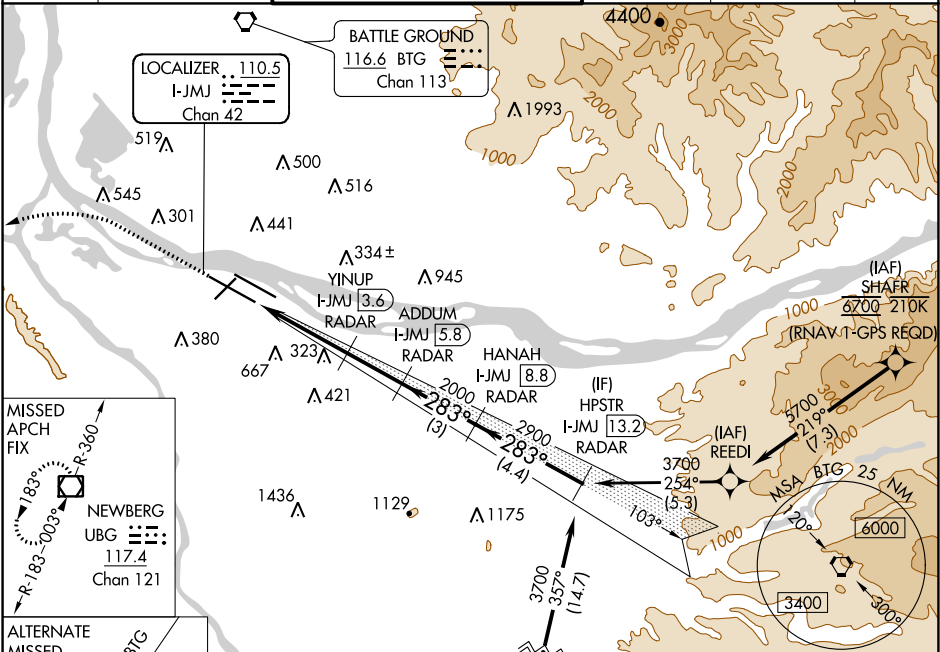
LOC/DME I-JMJ 110.5 Chan 42	APP CRS 283°	Rwy Idg 11000 TDZE 23 Apt Elev 31
---	------------------------	--

ILS or LOC RWY 28L
PORTLAND INTL (PDX)

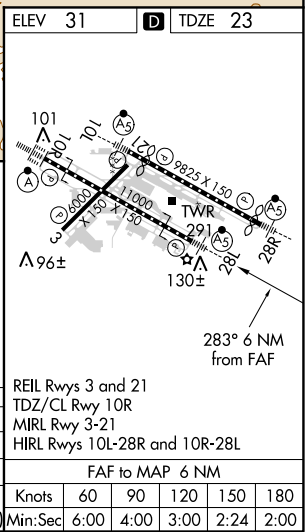
Simultaneous approach authorized. Autopilot coupled approach NA below 880. DME or RADAR required. For inop ALS, increase S-ILS 28L Cat E visibility to RVR 4500 and increase S-LOC 28L Cat E visibility to 1 1/2 SM.

MALSR MISSED APPROACH: Climb to 2100 then climbing left turn to 4000 on UBG R-360 to UBG VOR/DME and hold.

D-ATIS 128.35 269.9	PORTLAND APP CON 124.35 299.2	PORTLAND TOWER Rwys 10L-28R 118.7 257.8 Rwys 3-21, 10R-28L 123.775 251.125	GND CON 121.9 348.6	CLNC DEL 120.125 318.1	CPDLC
---	---	--	-------------------------------	----------------------------------	-------



ELEV 31	TDZE 23
VGSi and ILS glidepath not coincident (VGSi Angle 3.00/TCH 72).	
HPSTR I-JMJ 13.2 RADAR	
ADDUM I-JMJ 5.8 RADAR	
HANAH I-JMJ 8.8 RADAR	
YINUP I-JMJ 3.6 RADAR	
*LOC only	
I-JMJ 0.2	
I-JMJ 1	
1280*	
2000	
2900	
3700	
GS 3.00° TCH 55	
1.2 2.6 NM 2.2 NM 3 NM 4.4 NM	
CATEGORY	A B C D E
S-ILS 28L	306/24 283 (300-1/2)
S-LOC 28L	480/24 457 (500-1/2) 480/45 457 (500-3/4)
CIRCLING	720-1 689 (700-1) 760-1 729 (800-1) 1060-3 1029 (1100-3) 1140-3 1109 (1200-3)



NW-1, 31 DEC 2020 to 28 JAN 2021

NW-1, 31 DEC 2020 to 28 JAN 2021