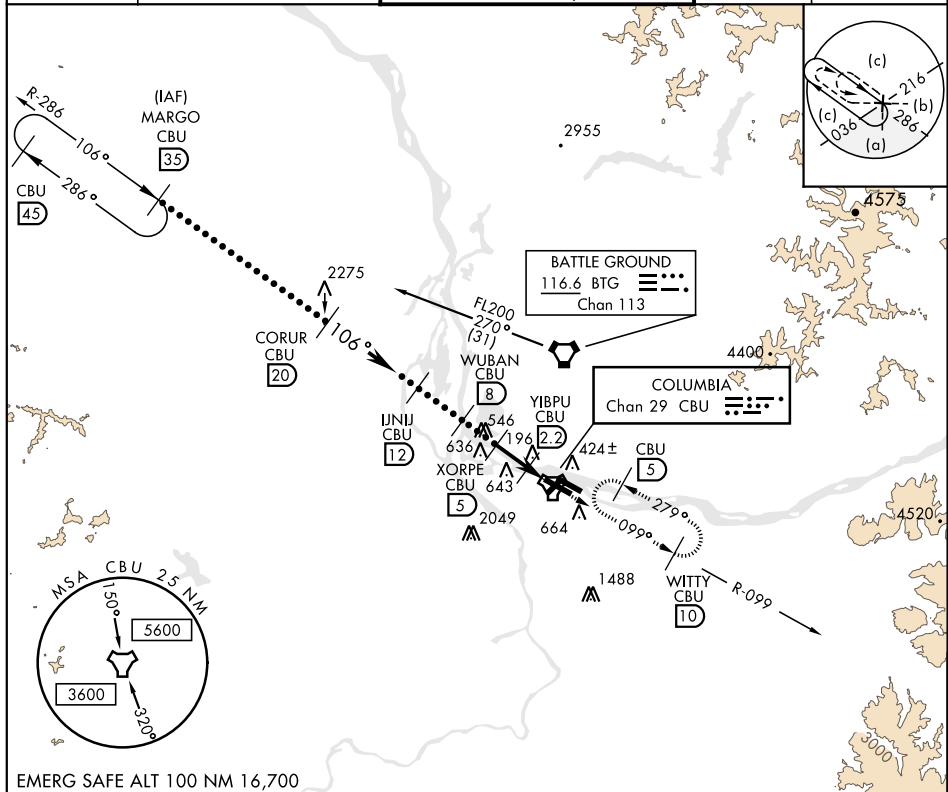


## HI-TACAN RWY 10R

TACAN CBU Chan <b>29</b>	APCH CRS <b>106°</b>	Rwy ldg <b>11,000</b> TDZE <b>24</b> Arprt Elev <b>31</b>	JAL-330 [USAF]	PORTLAND INTL (KPDJ)
* When ALS inop, increase CAT C RVR to 50 and vis to 1½ miles, CAT DE vis to 1¾ miles. ** When VGSI rwy 28R inop, circling rwy 28R NA at night.			ALS-F-2	MISSED APPROACH: Climb to 4000 via CBU TACAN R-099 to WITTY/CBU 10 DME and hold, continue climb in holding.
ATIS <b>128.35 269.9</b>	PORTLAND APP CON <b>118.1 284.6</b> (100°-279°) <b>124.35 299.2</b> (280°-099°)	<b>118.7 257.8</b> Rwy 10L-28R <b>123.775 251.125</b> Rwy 3-21, 10R-28L	GND CON <b>121.9 348.6</b>	CLNC DEL <b>120.125 318.1</b>



MARGO R-286 CORUR UNJ WUBAN XORPE YIBPU JURUL TACAN			VGSI and descent angles not coincident.	WITTY CBU 10	ELEV 31	TDZE 24
FL200 7500 3600 2500 1600 620			4.4 NM			
CATEGORY	C	D	E			
S-10R *	460/40 436 (500-¾)	460/50 436 (500-1)				
CIRCLING **	760-2 729 (800-2)	1000-3 969 (1000-3)	1160-3 1129 (1200-3)			

## HI-TACAN RWY 10R