

PORTLAND, OREGON

HI-ILS or LOC/DME RWY 10R

LOC/DME I-PDX 110.5 Chgn 42	APCH CRS 103°	Rwy Idg 11,000 THRE 23 Arpt Elev 31
---	-------------------------	--

JAL-330 [USAF]

PORTLAND INTL (KPDX)

T * When ALS inop, increase RVR to 40 and vis to $\frac{3}{4}$ mile.
 ** When ALS inop, increase CAT CDE RVR to 60 and vis to $1\frac{1}{2}$ miles.

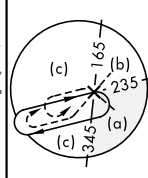


MISSED APPROACH: Climb to 1100 then climbing right turn to 5000 on BTG VORTAC R-160 to MULES/BTG 17.7 DME and hold, continue climb-in-hold to 5000.


ATIS		PORTLAND APP CON	PORTLAND TOWER	GND CON	CLNC DEL
118.35	269.9	118.1 284.6 (100%-27.9%)	257.8 Rwy 10L-28R	121.9 348.6	120.125 318.1
		124.35 299.2 (280%-0.9%)	123.775 251.125 Rwy 3-21, 10R-28L		

*** When VGSI rwy 28R inop, circling rwy 28R NA at night.


Simultaneous approach authorized with Rwy 10L.



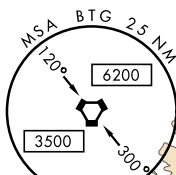
USE I-PDX DME
WHEN ON LOC COURSE.

BATTLE GROUND
116.6 BTG  
Chan 113

LOCALIZER 110.5
I-PDX
Chan 42

NEWBERG
117.4 UBG 
Chan 121

EMERG SAFE ALT 100 NM
16.700 FROM "BTG" VORTAC



CATEGORY	C		D		E
S-ILS 10R *	223/18		200	(200-3%)	
S-LOC/DME 10R **	440/40		417	(500-3%)	
CIRCLING ***	760-2		980-3		1140-3
	729 (800-2)		949 (1000-3)		1109 (1200-3)

PORTLAND, OREGON

45°35'N-122°36'W

PORTLAND INTL (KPDX)

Amdt 7B 18OCT12

HI-ILS or LOC/DME RWY 10R