

WAAS CH 78212 W21A	APP CRS 211°	Rwy Idg TDZE Apt Elev	9059 4452 4452
--	------------------------	-----------------------------	---

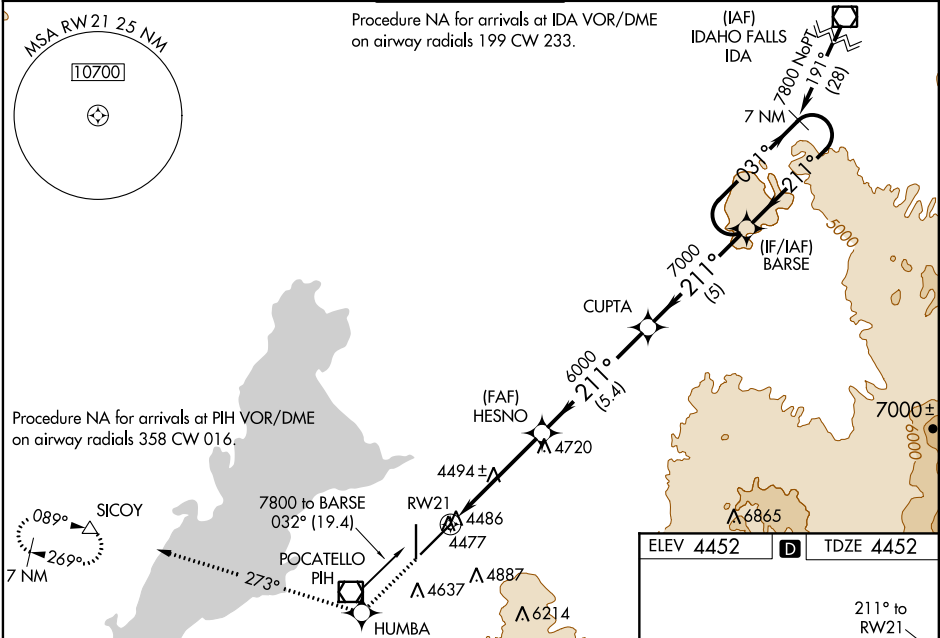
RNAV (GPS) RWY 21
POCATELLO RGNL (PIH)

⚠ Inoperative table does not apply to LNAV Cat D. For inoperative MALSR when using Idaho Falls altimeter setting, increase LPV all Cats visibility to 1 1/4 mile.
⚠ For uncompensated Baro-VNAV systems, LNAV/VNAV NA below -23°C (-9°F) or above 39°C (102°F). DME/DME RNP-0.3 NA. When local altimeter setting not received, use Idaho Falls altimeter setting and increase all DA and MDA 140 feet; increase LPV all Cats, LNAV Cat C, and Circling Cat C and D visibility 1/4 mile, increase LNAV/VNAV all Cats visibility 1/2 mile. Baro-VNAV and VDP NA when using Idaho Falls altimeter setting. Circling NA southeast of Rwy 3-21.
RVR 1800 authorized with use of FD or AP or HUD to DA, NA when using Idaho Falls altimeter setting.

MALSR

MISSED APPROACH: Climb to 7000 direct HUMBA and on 273° track to SICOY and hold.

ATIS 135.625	SALT LAKE CENTER 128.35 239.25	POCATELLO TOWER* 119.1 (CTAF) 0 257.8	GND CON 121.9	UNICOM 122.95
------------------------	--	--	-------------------------	-------------------------



7000 ↑

HUMBA

273° tr

SICOY △

*LNAV only.

RW21

HESNO

CUPTA

BARSE

Holding Pattern

0.9 NM

3.7 NM

5.4 NM

5 NM

7000

6000

7000

7800

GP 3.00°

TCH 56

VGSI and RNAV glidepath not coincident (VGSI Angle 3.00/TCH 52).

CATEGORY	A	B	C	D
LPV DA #		4652/24	200 (200-1/2)	
LNAV/VNAV DA		4797/40	345 (400-3/4)	
LNAV MDA		4780/24	328 (400-1/2)	4780/50 328 (400-1)
CIRCLING	4820-1 368 (400-1)	4920-1 468 (500-1)	4920-1 1/2 468 (500-1 1/2)	5020-2 568 (600-2)

ELEV 4452

TDZE 4452

211° to RW21

7150 X 100

35

5035 X 150

TWR 4560

HIRL Rwy 3-21

MIRL Rwy 17-35

REIL Rwy 3 and 17

NW-1, 31 DEC 2020 to 28 JAN 2021

NW-1, 31 DEC 2020 to 28 JAN 2021