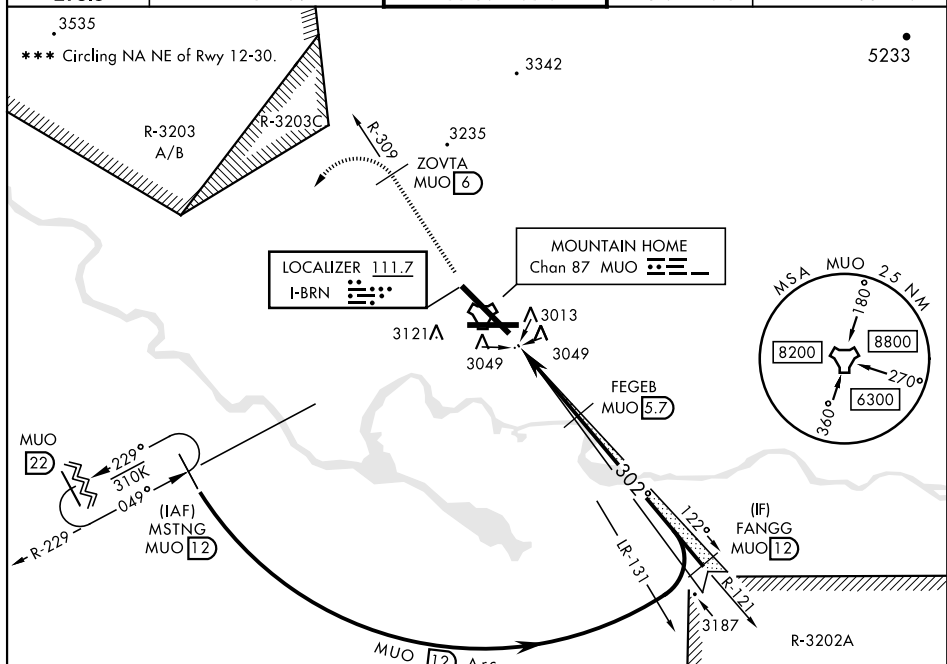


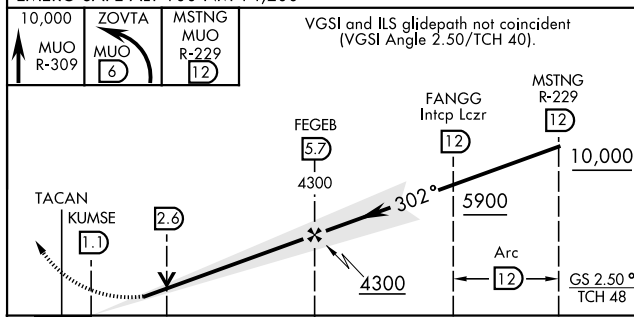
ILS or LOC Z RWY 30

LOC I-BRN 111.7	APCH CRS 302°	Rwy Idg 13,510 TDZE 2996 Arpt Elev 2996	AL-323 [USAF]	MOUNTAIN HOME AFB (KMUO)	
<p>▼ * When ALS inop, increase CAT ABCDE RVR to 47' and vis to 1 mile.</p> <p>** When ALS inop, increase CAT AB RVR to 55' and vis to 1 mile, CAT CDE vis to 1 3/8 miles.</p>			ALSF-1 	MISSED APPROACH: Climb to 10,000 via MDO R-309 to ZOVT/6 DME, turn left and intercept MDO R-229 to MSTNG/12 DME and hold. Continue climb in hold to 10,000.	
ATIS 273.5	MOUNTAIN HOME APP CON 124.8 259.1	MOUNTAIN HOME TOWER 133.85 253.5	GND CON 120.5 275.8	CLNC DEL 127.1 290.425	



RADAR or DME REQUIRED

EMERG SAFE ALT 100 NM 14,200



	4.7 NM					
CATEGORY	A	B	C	D	E	
S-ILS 30 *	3246/40 250 (300-¾)					
S-LOC 30 **	3460/24 464 (500-½)		3460/50 464 (500-1)			
CIRCLING ***	3520-1 524 (600-1)	3560-1 564 (600-1)	3560-1½ 564 (600-1½)	3560-2 564 (600-2)	3700-2½ 704 (800-2½)	

