

WAAS CH <b>42513</b> <b>W29A</b>	APP CRS <b>292°</b>	Rwy Idg <b>5126</b> TDZE <b>1496</b> Apt Elev <b>1497</b>
--	------------------------	---

RNAV (GPS) RWY 29

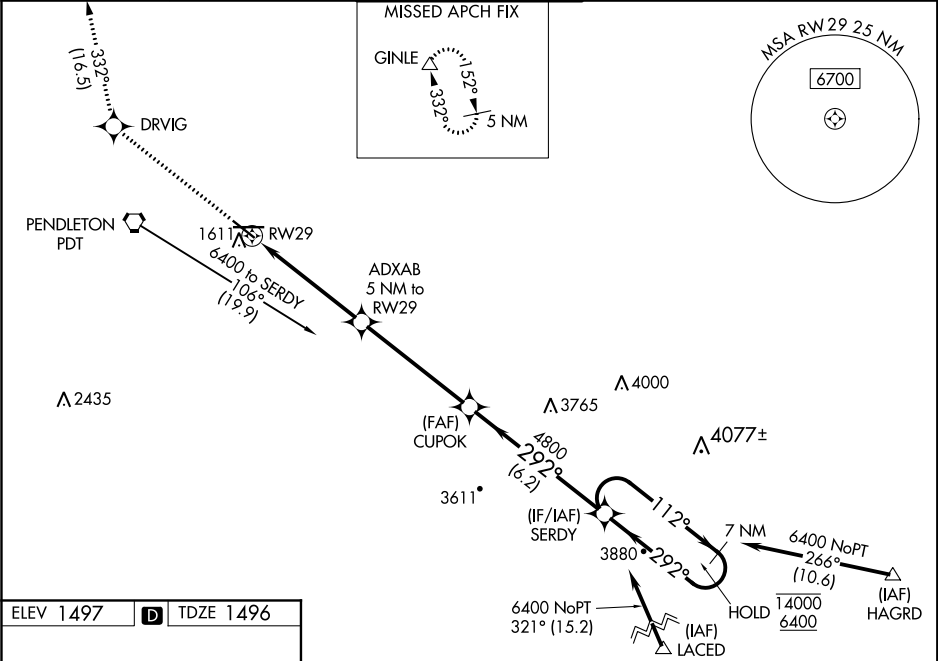
EASTERN OREGON RGNL AT PENDLETON (PDT)

RNP APCH.

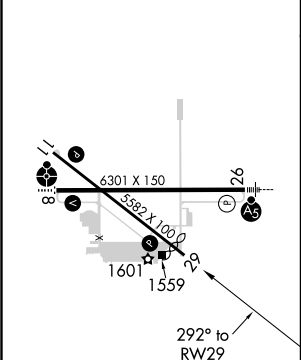
Baro-VNAV and VDP NA when using Walla Walla altimeter setting. For uncompensated Baro-VNAV systems, LNAV/VNAV NA below -17°C or above 54°C. When local altimeter setting not received, use Walla Walla altimeter setting and increase all DA/MDA 120 feet, LNAV/VNAV all Cats visibility ¼ SM, LNAV Cat C visibility ¼ SM, Cat D visibility ⅓ SM, Circling Cat C visibility ¼ SM and Circling Cat D visibility ½ SM.

MISSED APPROACH:  
Climb to 5000 direct  
DRVIG and on track  
332° to GINLE and  
hold.

ASOS <b>118.325</b>	CHINOOK APP CON * <b>133.15 379.15</b>	PENDLETON TOWER * <b>119.7 (CTAF) 257.8</b>	GND CON <b>121.9 257.8</b>	UNICOM <b>122.95</b>
------------------------	---	--	-------------------------------	-------------------------



ELEV <b>1497</b>	<b>D</b>	TDZE <b>1496</b>
------------------	----------	------------------



REIL Rws 11 and 29  
MIRL Rwy 11-29  
HIRL Rwy 8-26

5000	DRVIG	GINLE	VGSI and RNAV glidepath not coincident (VGSI Angle 3.00/TCH 84).			
↑	✱	tr 332°	CUPOK	SERDY	7 NM Holding Pattern	
*LNAV only		ADXAB 5 NM to RW29	4800	112°	14000	
*1 NM to RW29			292°	292°	6400	GP 3.00° TCH 55°
RW29		3160*	4800			
1		4 NM	4.9 NM	6.2 NM		
CATEGORY	A	B	C	D		
LPV DA	1747-1		251 (300-1)			
LNAV/VNAV DA	1801-1		305 (400-1)			
LNAV MDA	1880-1	384 (400-1)	1880-1½	384 (400-1½)		
CIRCLING	1920-1	1960-1	1980-1½	2200-2¼		
	423 (500-1)	463 (500-1)	483 (500-1½)	703 (800-2¼)		