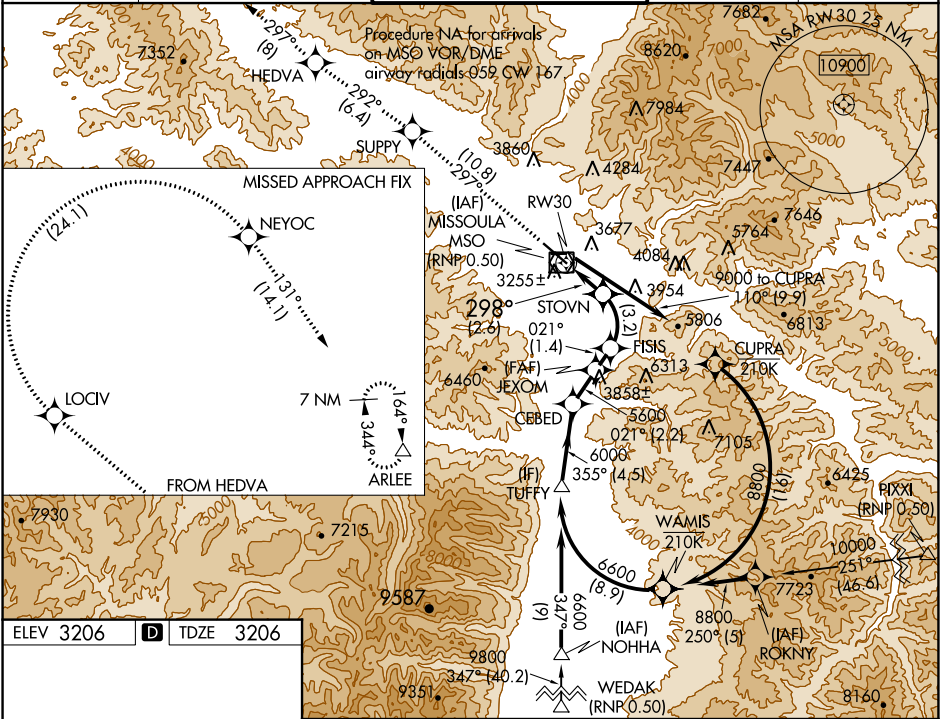


APP CRS	Rwy Idg	9501
298°	TDZE	3206
	Apt Elev	3206

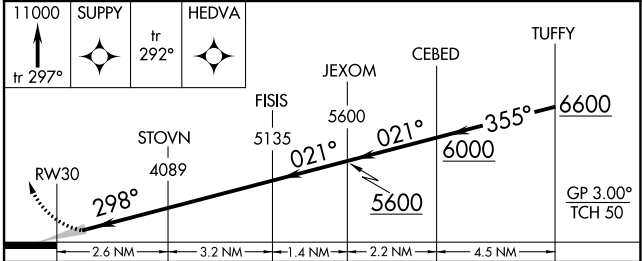
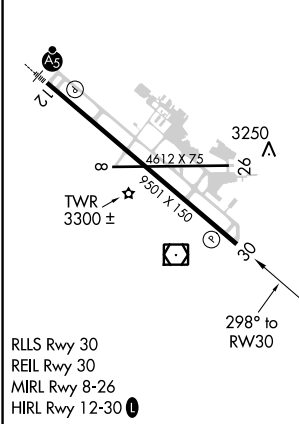
RNAV (RNP) RWY 30
MISSOULA INTL (MSO)

RNP AR APCH, RF required.	MISSED APPROACH: Climb to 11000 on track 297° to SUPPLY and on track 292° to HEDVA and on track 297° to LOCIV, then right turn to NEYOC and on track 131° to ARLEE and hold. *Misted approach requires minimum climb of 215 feet per NM to 5000.
<p>For uncompensated Baro-VNAV systems, procedure NA below -21°C (-5°F) or above 43°C (109°F). When local altimeter setting not received, procedure NA.</p>	

ATIS 126.65	SPOKANE APP CON * 124.9 298.95	MISSOULA TOWER * 118.4 (CTAF) 377.175	GND CON 121.9	UNICOM 122.95
----------------	-----------------------------------	--	------------------	------------------



ELEV 3206	D	TDZE 3206
-----------	---	-----------



CATEGORY	A	B	C	D
RNP 0.30 DA *	3524-1	318 (400-1)		
RNP 0.30 DA	3582-1 1/4	376 (400-1 1/4)		
AUTHORIZATION REQUIRED				

NW-1, 31 DEC 2020 to 28 JAN 2021

NW-1, 31 DEC 2020 to 28 JAN 2021