

WAAS CH 56240 W31A	APP CRS 306°	Rwy Idg TDZE Apt Elev	5623 2627 2630
--	------------------------	-----------------------------	---

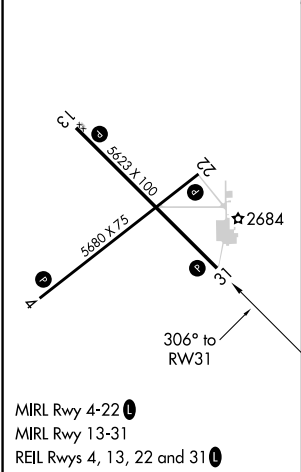
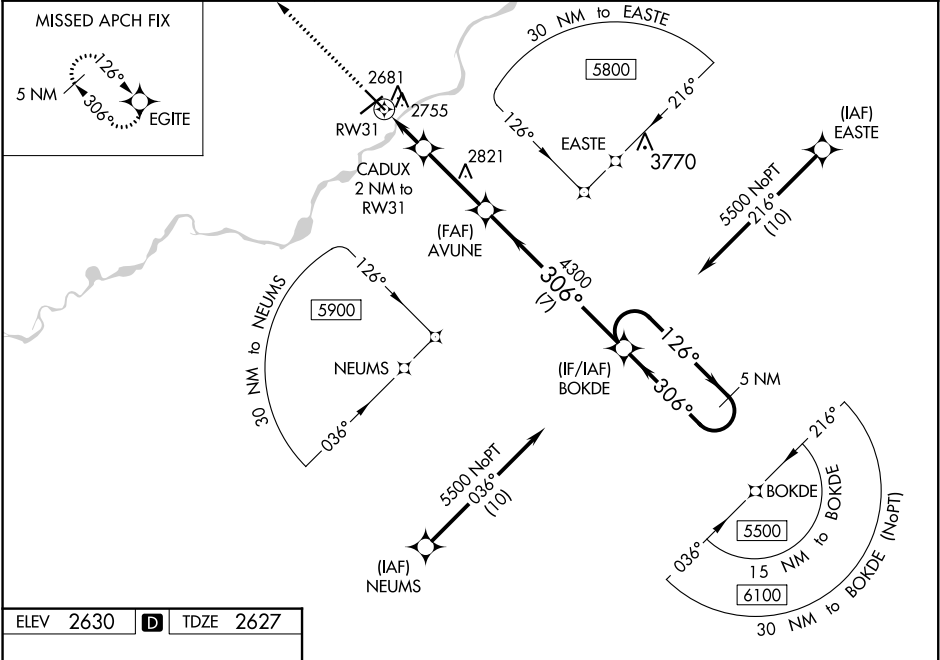
RNAV (GPS) RWY 31

FRANK WILEY FIELD (MLS)

▼ For uncompensated Baro-VNAV systems, LNAV/VNAV NA below -24°C (-11°F) or above 54°C (130°F). Baro-VNAV and VDP NA when using Forsyth altimeter setting. DME/DME RNP-0.3 NA. When local altimeter setting not received, use Forsyth altimeter setting; increase LPV DA to 2965 and all visibility 1/8 mile, and increase LNAV/VNAV DA to 3005 and all visibility 1/4 mile. Increase all MDA 100 feet and all Cat C and D visibility 1/4 mile.

MISSED APPROACH: Climb to 6000 direct EGITE and hold, continue climb-in-hold to 6000.

ASOS 135.575	SALT LAKE CENTER 126.85 305.2	UNICOM 123.0 (CTAF) 1
------------------------	---	---------------------------------



6000	EGITE				
* LNAV only	CADUX 2 NM to RW31	AVUNE 4300	BOKDE 5500	5 NM Holding Pattern	
	* 1.1 NM to RW31	3300*	4300	126° 306°	GP 3.00° TCH 43
	1.1 NM 0.9 NM 3.1 NM 7 NM				
CATEGORY	A	B	C	D	
LPV DA	2877-1 250 (300-1)				
LNAV/VNAV DA	2917-1 290 (300-1)				
LNAV MDA	3020-1 393 (400-1)	3020-1 1/8 393 (400-1 1/8)			
CIRCLING	3060-1 430 (500-1)	3100-1 470 (500-1)	3120-1 1/2 490 (500-1 1/2)	3320-2 1/4 690 (700-2 1/4)	