

APP CRS  
**328°**

Rwy Idg  
TDZE  
Apt Elev  
**N/A**  
**N/A**  
**1335**

**RNAV (GPS)-D**  
ROGUE VALLEY INTL-MEDFORD (MFR)

RNP APCH.

▽

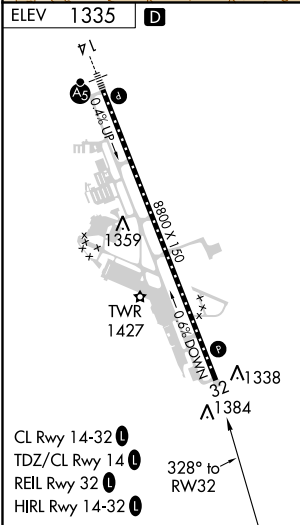
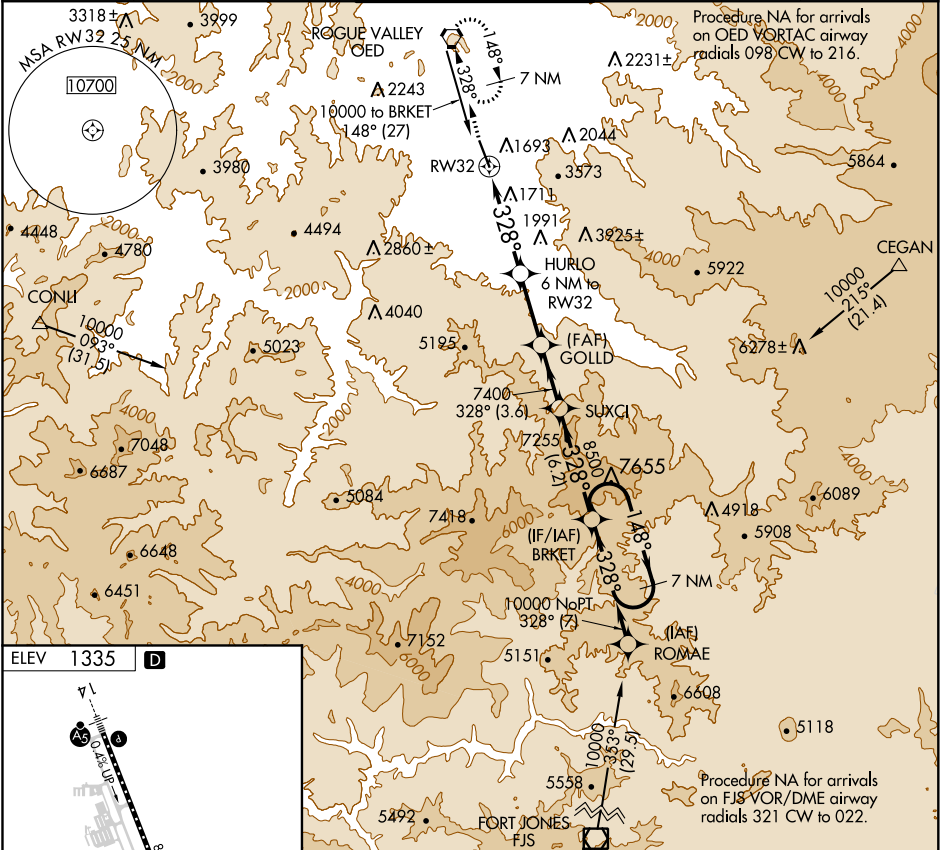
⚠


❄

-3°C

MISSED APPROACH: Climb to 7800 direct OED VORTAC and hold, continue climb-in-hold to 7800.

ATIS <b>127.25</b>	CASCADE APP CON * <b>124.3 379.9</b>	MEDFORD TOWER * <b>119.4 (CTAF) 257.8</b>	GND CON <b>121.8</b>	UNICOM <b>122.95</b>
-----------------------	---	--	-------------------------	-------------------------



7800 ↑	OED 	VGSI and descent angles not coincident (VGSI Angle 3.00/TCH 50).		7 NM Holding Pattern	
		BRKET			
HURLO 6 NM to RW32		GOLDD	SUXCI	10000	
RW32	5800	7400	8500	148° → ← 328°	
≤ 6.90° TCH 55					
6 NM		4 NM	3.6 NM	6.2 NM	
CATEGORY	A	B	C	D	
CIRCLING	3600-1¼ 2265 (2300-1¼)	3600-1½ 2265 (2300-1½)	3600-3	2265 (2300-3)	