


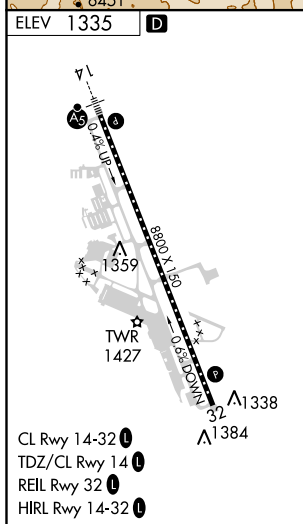
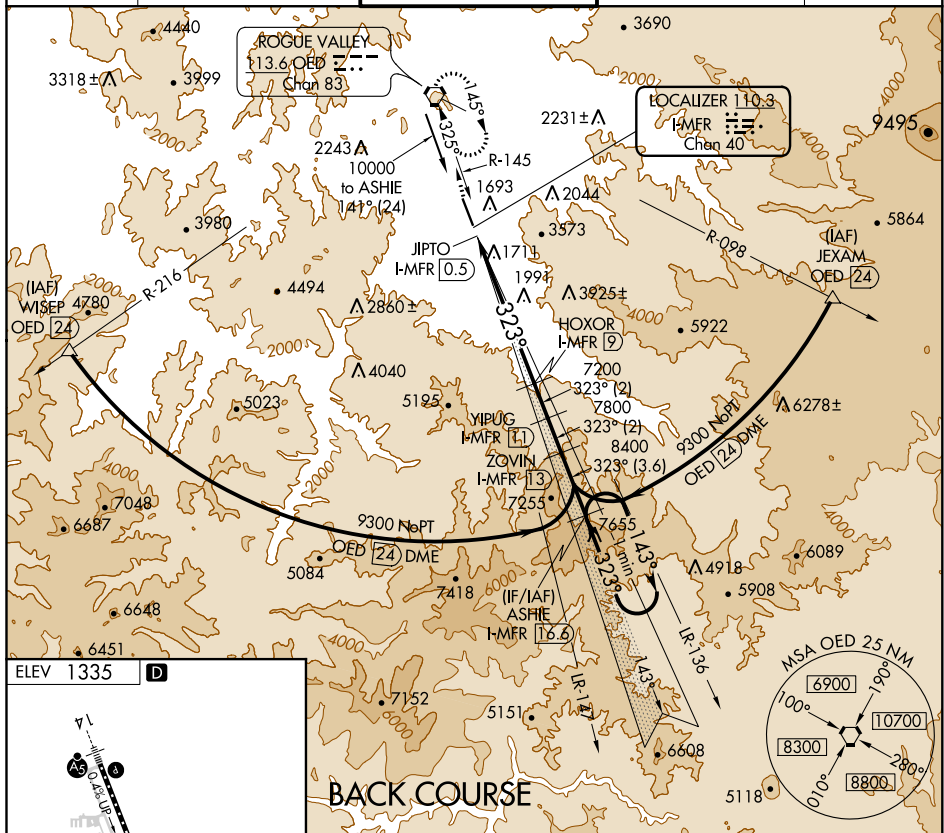


LOC/DME I-MFR 110.3 Chan 40	APP CRS 323°	Rwy Idg TDZE Apt Elev 1335	N/A N/A
---	------------------------	---	--------------------------

LOC/DME BC-B
ROGUE VALLEY INTL-MEDFORD (MFR)

   -3°C	Visibility reduction by helicopters NA.	MISSED APPROACH: Climb to 7600 direct OED VORTAC and hold, continue climb-in-hold to 7600.
--	---	--

ATIS 127.25	CASCADE APP CON * 124.3 379.9	MEDFORD TOWER * 119.4 (CTAF) 0 257.8	GND CON 121.8	UNICOM 122.95
----------------	----------------------------------	---	------------------	------------------



7600 ↑	OED 	VSGI and descent angles not coincident (VGSJ Angle 3.00/TCH 50).		ASHIE I-MFR 16.6	One Minute Holding Pattern
Disregard GS indications.		YIPUG I-MFR 13	ZOVIN I-MFR 11	9300 143° → ← 323°	
JIPTO I-MFR 0.5		HOXOR I-MFR 9	7800	323°	
5.98° TCH 45		7200	Use I-MFR DME when on the localizer course.		
0.7		8.5 NM	2 NM	2 NM	3.6 NM
CATEGORY	A	B	C	D	
CIRCLING	3540-1½ 2205 (2300-1¼)	3540-1½ 2205 (2300-1½)	3540-3	2205 (2300-3)	

ROGUE VALLEY INTL-MEDFORD (MFR)
LOC/DME BC-B