

LOC I-HLN	APP CRS	Rwy Idg	9000
110.1	267°	TDZE	3852
		Apt Elev	3877

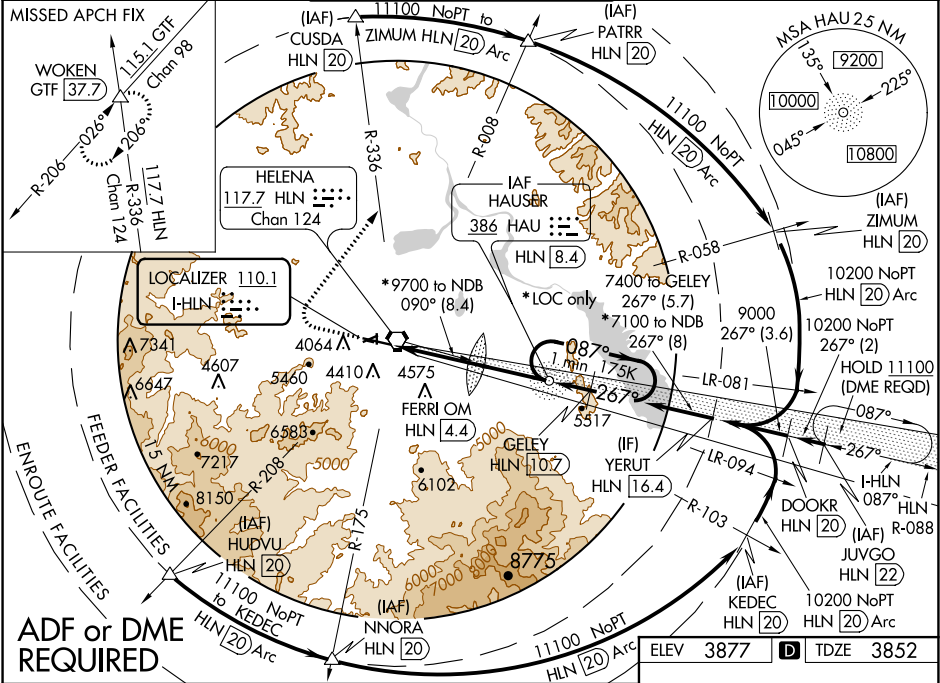
ILS or LOC Z RWY 27  
HELENA RGNL (HLN)

**⚠** Inoperative table does not apply to S-LOC 27 Cat C/D/E. For inoperative MALSRL, increase S-ILS 27 Cat E visibility to 3/4 mile, increase FERRI fix minimums: S-LOC 27 Cat C/D/E visibility to 1 1/8 miles. Missed approach requires a minimum climb of 300 ft per NM to 6000, if unable to meet climb gradient, see ILS or LOC Y RWY 27. Circling NA south of Rwy 9-27 for Cats D and E. Night Landing: Rwy 5, 23, 35 NA. DME from HLN VORTAC, simultaneous reception of I-HLN and HLN DME required. Holding at HAU NDB authorized for Cat A and B aircraft only.

**MALSR**  
AS

**MISSED APPROACH:**  
Climb to 4600 then climbing right turn to 9000 on heading 021° and HLN VORTAC R-336 to WOKEN/ GTF 37.7 DME and hold.

ATIS 120.4	HELENA APP COM★ 119.5 229.4	HELENA TOWER★ 118.3 (CTAF) 0 257.8	GND CON 121.9	UNICOM 122.95
---------------	--------------------------------	---------------------------------------	------------------	------------------



	4600	9000	HLN	WOKEN					
	↑	hdg 021°	R-336	△					
	*LOC only								
	FERRI OM HLN 4.4								
	HAU NDB HLN 8.4								
	GELEY HLN 10.7								
	YERUT HLN 16.4								
	9000								
	GS 3.00° TCH 55								
	4.7 NM								
	4 NM								
	2.3 NM								
	5.7 NM								
CATEGORY	A	B	C	D	E				
S-ILS 27	4052-1/2 200 (200-1/2)								
S-LOC 27	5620-3/4 1768 (1800-3/4)	5620-1 1768 (1800-1)	5620-3	1768 (1800-3)					
CIRCLING	5620-1 1/4 1743 (1800-1 1/4)	5620-1 1/2 1743 (1800-1 1/2)	5920-3	2043 (2100-3)					
	FERRI FIX MINIMUMS*								
S-LOC 27	4520-1/2	668 (700-1/2)	4520-1 1/2	668 (700-1 1/2)					
CIRCLING	4640-1 763 (800-1)	4800-1 1/4 923 (1000-1 1/4)	5920-3	2043 (2100-3)					

ELEV 3877 D TDZE 3852

REIL Rwy 9, 17 and 35  
MIRL Rwy 5-23 and 17-35  
HIRL Rwy 9-27

FAF to MAP 8.7 NM

Knots	60	90	120	150	180
Min:Sec	8:42	5:48	4:21	3:29	2:54

NW-1, 31 DEC 2020 to 28 JAN 2021

NW-1, 31 DEC 2020 to 28 JAN 2021