
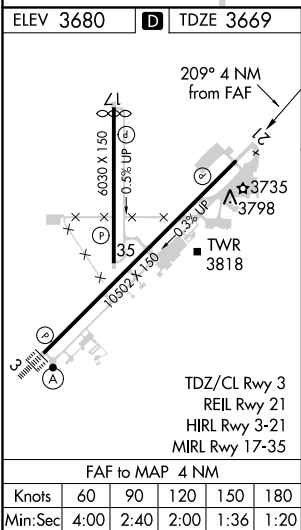
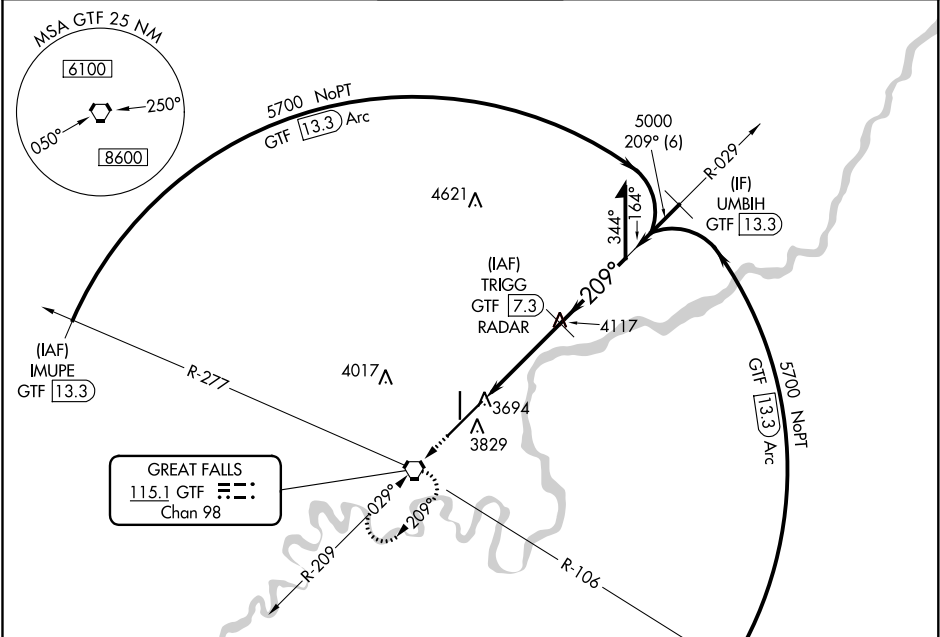


VORTAC GTF	APP CRS	Rwy Idg	10502
115.1	209°	TDZE	3669
Chan 98		Apt Elev	3680

VOR RWY 21
GREAT FALLS INTL (GTF)

 -33°C	DME or RADAR required.	MISSED APPROACH: Climb to 8000 direct GTF VORTAC, continue climb-in-hold to 8000.
--	------------------------	--

ATIS 126.6 269.0	GREAT FALLS APP CON 128.6 379.175	GREAT FALLS TOWER 118.7 282.2	GND CON 121.7 348.6	CLNC DEL 121.7 348.6
---------------------	--------------------------------------	----------------------------------	------------------------	-------------------------



DME or RADAR REQUIRED				
8000 GTF				
TRIGG GTF 7.3 RADAR				
Remain within 10 NM				
029°				
5700				
209°				
5000				
0.8 3.1 NM				
CATEGORY A B C D				
S-21 4000/55 331 (400-1)				
CIRCLING 4120-1 440 (500-1) 4140-1 460 (500-1) 4320-1 640 (700-1 3/4) 4420-2 740 (800-2 1/4)				

NW-1, 31 DEC 2020 to 28 JAN 2021

NW-1, 31 DEC 2020 to 28 JAN 2021