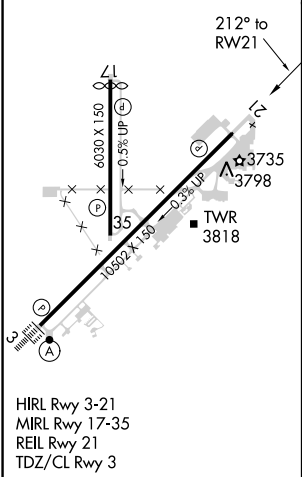
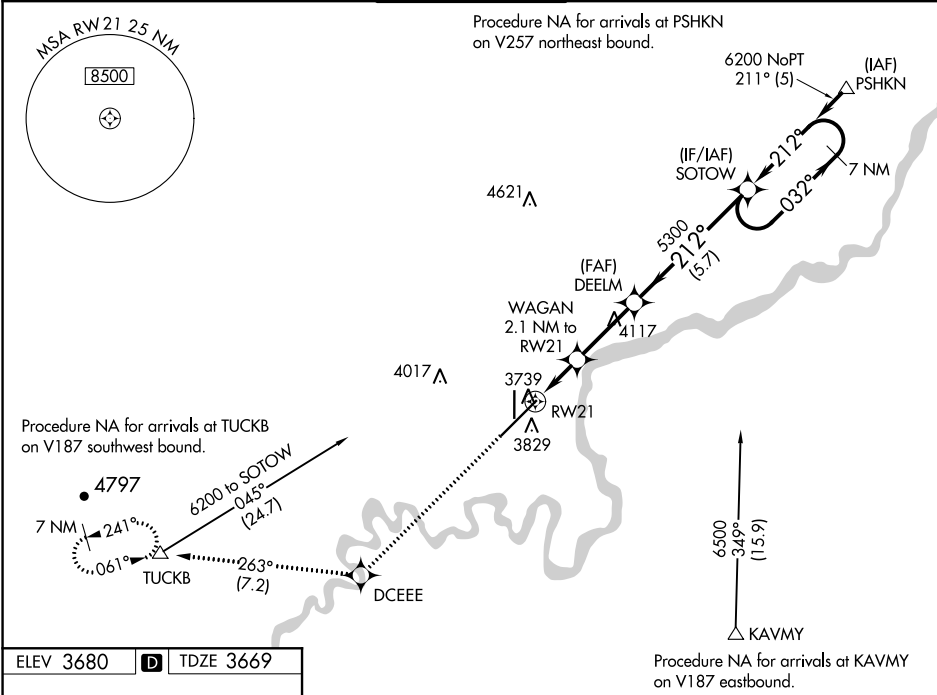


WAAS CH <b>90221</b> <b>W21A</b>	APP CRS <b>212°</b>	Rwy Idg TDZE <b>3669</b> Apt Elev <b>3680</b>
--	------------------------	---

**RNAV (GPS) Y RWY 21**  
GREAT FALLS INTL (GTF')

 -33°C	For uncompensated Baro-VNAV systems, LNAV/VNAV NA below -24°C (-11°F) or above 49°C (121°F). DME/DME RNP-0.3 NA.	MISSED APPROACH: Climb to 8000 direct DCEEE and on track 263° to TUCKB and hold, continue climb-in-hold to 8000.
--	--	--

ATIS <b>126.6 269.0</b>	GREAT FALLS APP CON <b>128.6 379.175</b>	GREAT FALLS TOWER <b>118.7 282.2</b>	GND CON <b>121.7 348.6</b>	CLNC DEL <b>121.7 348.6</b>
----------------------------	---	---	-------------------------------	--------------------------------



8000	DCEEE	tr 263°	TUCKB	VGSI and RNAV glidepath not coincident. (VGSI Angle 3.00/TCH 75).
				SOTOW 7 NM Holding Pattern
*LNAV only.	WAGAN 2.1 NM to RWY 21	DEELM 5300	5300	6200
	*0.8 NM to RWY 21			
	4380*			GP 3.00° TCH 59
	0.8	1.3 NM	2.9 NM	5.7 NM
CATEGORY	A	B	C	D
LPV DA	3869/40 200 (200-¾)			
LNAV/VNAV DA	3927/45 258 (300-¾)			
LNAV MDA	4000/55	331 (400-1)	4000/50	331 (400-1)
CIRCLING	4120-1 440 (500-1)	4140-1 460 (500-1)	4320-1¾ 640 (700-1¾)	4420-2¼ 740 (600-2¼)