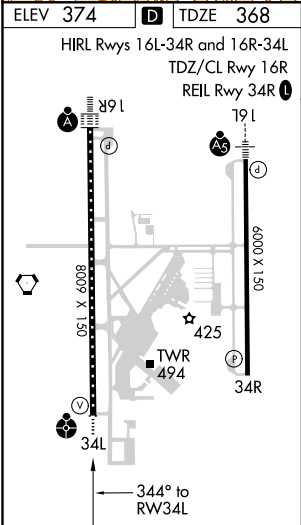
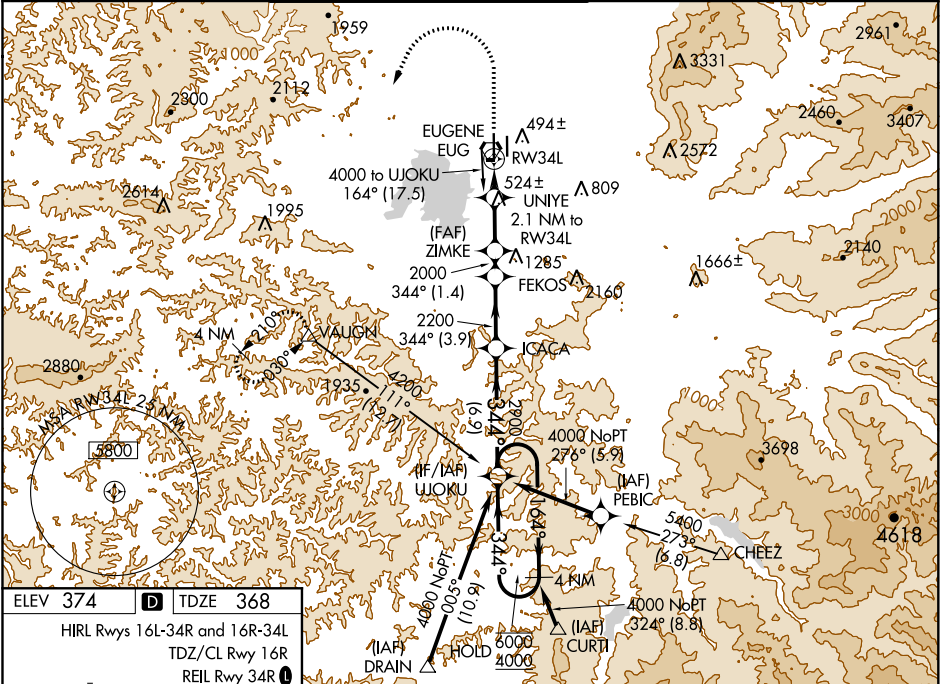


WAAS CH 45600 W34A	APP CRS 344°	Rwy Idg TDZE Apt Elev	8009 368 374
--	------------------------	-----------------------------	---

RNAV (GPS) Y RWY 34L
MAHLON SWEET FIELD (EUG)

RNP APCH.	ODALS	MISSED APPROACH: Climb to 1500, then climbing left turn to 4000 direct VAUGHN and hold.
Simultaneous approach authorized. LNAV procedure NA during simultaneous operations. Use of FD or AP providing RNAV track guidance required during simultaneous operations. For uncompensated Baro-VNAV systems, LNAV/VNAV NA below -10°C or above 54°C. For inop ALS increase LNAV/VNAV visibility Cats A-B to RVR 4500. Inop table does not apply to LPV minimums.		

ATIS 125.225	CASCADE APP CON★ 119.6 348.7	EUGENE TOWER★ 118.9 (CTAF) 0 371.9 (Rwy 16R/34L) 124.15 371.9 (Rwy 16L/34R)	GND CON 121.7 269.5	CLNC DEL 121.7 269.5	UNICOM 122.95
------------------------	--	--	-------------------------------	--------------------------------	-------------------------



1500	4000	VAUGHN	ZIMKE	FEKOS	ICACA	UJOKU	4 NM Holding Pattern
							164° → 6000 ← 344° 4000
*LNAV only							
UNIYE 2.1 NM to RW34L							
*1.1 NM to RW34L							
RW34L							
1080* 2000							
GP 3.00° TCH 53							
→ 1.1 NM 1 NM → 2.9 NM → 1.4 NM → 3.9 NM → 6.9 NM →							
CATEGORY	A	B	C	D			
LPV DA	568/40		200 (200-¾)				
LNAV/VNAV DA	657/40		289 (300-¾)				
LNAV MDA	760/40		392 (400-¾)		760/50 392 (400-1)		
CIRCLING	820-1 446 (500-1)		840-1 466 (500-1)		1000-1¾ 626 (700-1¾)		
					1140-2½ 766 (800-2½)		

NW-1, 31 DEC 2020 to 28 JAN 2021

NW-1, 31 DEC 2020 to 28 JAN 2021