

WAAS CH 81827 W16A	APP CRS 164°	Rwy Ldg TDZE Apt Elev 6000 369 374
--	------------------------	--

RNAV (GPS) Y RWY 16L

MAHLON SWEET FIELD (EUG)

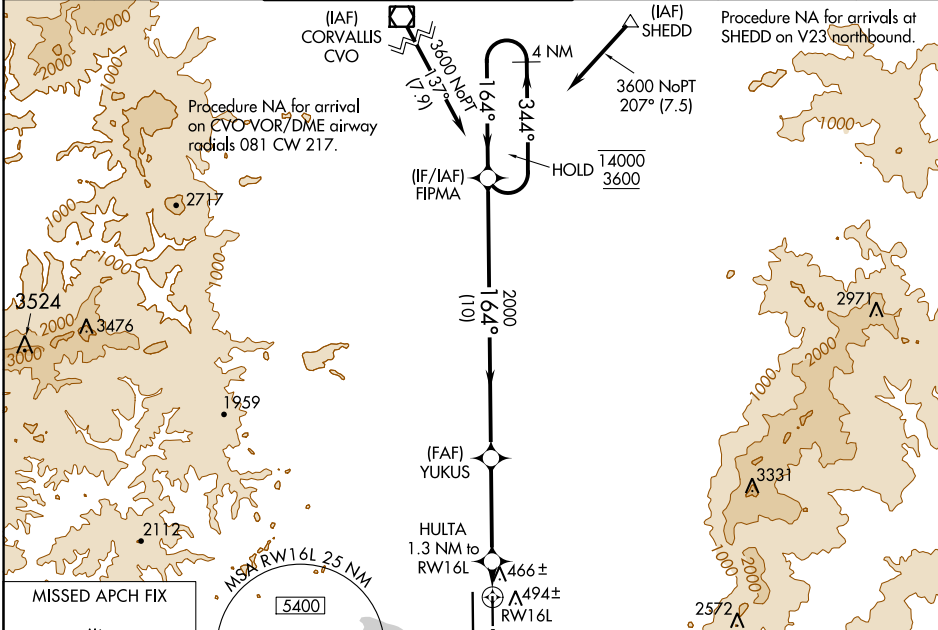
RNP APCH.

Simultaneous approach authorized. LNAV procedure NA during simultaneous operations. Use of FD or AP providing RNAV track guidance required during simultaneous operations. For uncompensated Baro-VNAV systems, LNAV/VNAV NA below -10°C or above 54°C. For Inop ALS, increase LNAV/VNAV all Cats visibility to ¾ SM, increase LNAV Cat C/D visibility to 1 SM.

MALSR

MISSED APPROACH: Climb to 5500 direct WEILD and on track 160° to SAGIN and hold, continue climb-in-hold to 5500.

ATIS 125.225	CASCADE APP CON★ 119.6 348.7	EUGENE TOWER ★ 118.9 (CTAF) 371.9 (Rwy 16R/34L) 124.15 371.9 (Rwy 16L/34R)	GND CON 121.7 269.5	CLNC DEL 121.7 269.5	UNICOM 122.95
------------------------	--	--	-------------------------------	--------------------------------	-------------------------



4 NM Holding Pattern		FIPMA	5500	WEILD	SAGIN
14000 ← 344°		YUKUS	↑	tr 160°	△
3600 → 164°		HULTA 1.3 NM to RWY 16L	* LNAV only		
GP 3.00° TCH 52		2000	* 820		
		10 NM	3.7 NM	1.3	
CATEGORY	A	B	C	D	
LPV DA	569-½		200 (200-½)		
LNAV/VNAV DA	632-½		263 (300-½)		
LNAV MDA	720-½ 351 (400-½)		720-⅝ 351 (400-⅝)		
CIRCLING	820-1 446 (500-1)	840-1 466 (500-1)	1000-1¼ 626 (700-1¼)	1140-2½ 766 (800-2½)	

