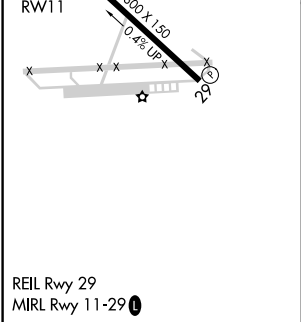
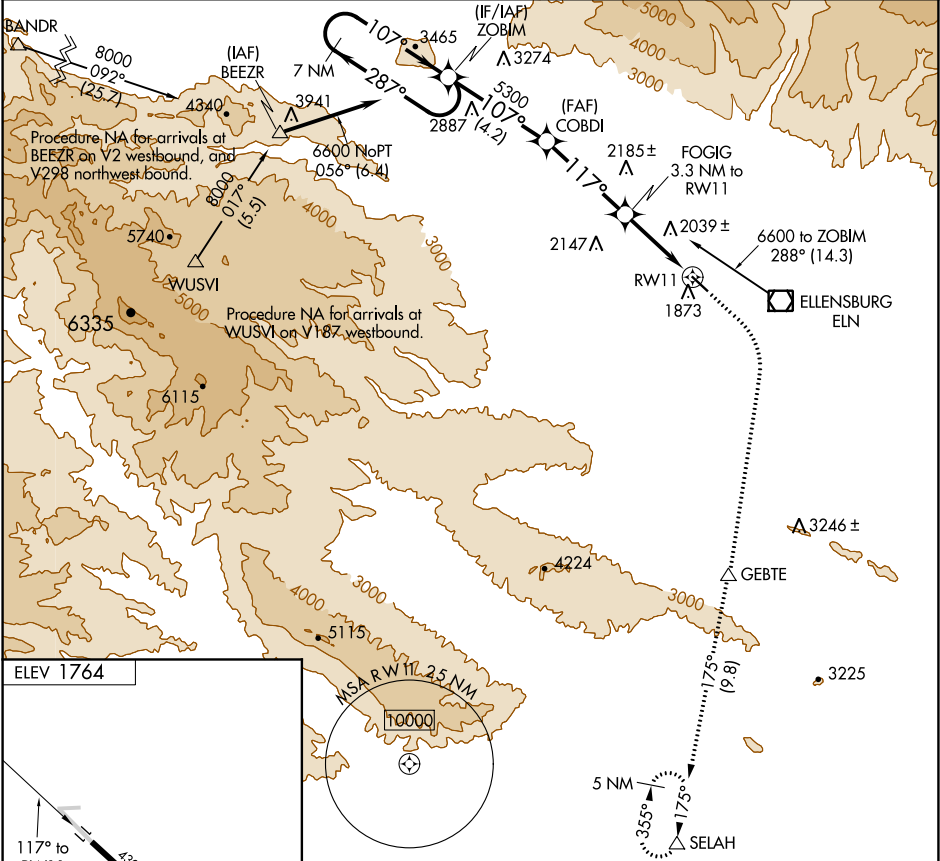


APP CRS	Rwy Idg	N/A
117°	TDZE	N/A
	Apt Elev	1764

RNAV (GPS)-C  
BOWERS FIELD (ELN)

<p><b>⚠</b> DME/DME RNP-0.3 NA. When local altimeter setting not received, use Pangborn Memorial altimeter setting: Increase all MDA 140 feet; increase Cats B/C visibility ¼ SM.</p>	<p>MISSED APPROACH: Climb to 2700 then climbing right turn to 5500 direct GEBTE and on track 175° to SELAH and hold.</p>
---	--

ASOS 118.375	SEATTLE CENTER 132.6 269.35	UNICOM 123.0 (CTAF) <b>0</b>
-----------------	--------------------------------	---------------------------------



7 NM Holding Pattern		ZOBIM	COBDI	2700	5500	GEBTE	tr 175°	SELAH
6600		287°	107°	5300	117°	FOGIG 3.3 NM to RW11	5.91° TCH 40	RW11
		4.2 NM	3.8 NM	3.3 NM				
CATEGORY	A	B	C	D				
CIRCLING	2660-1¼	896 (900-1 ¼)	2660-2¾ 896 (900-2¾)	2660-3 896 (900-3)				

NW-1, 31 DEC 2020 to 28 JAN 2021

NW-1, 31 DEC 2020 to 28 JAN 2021