

LOC I-SYD 111.3	APP CRS 032°	Rwy ldg 10165 TDZE 5328 Apt Elev 5344
---------------------------	------------------------	--

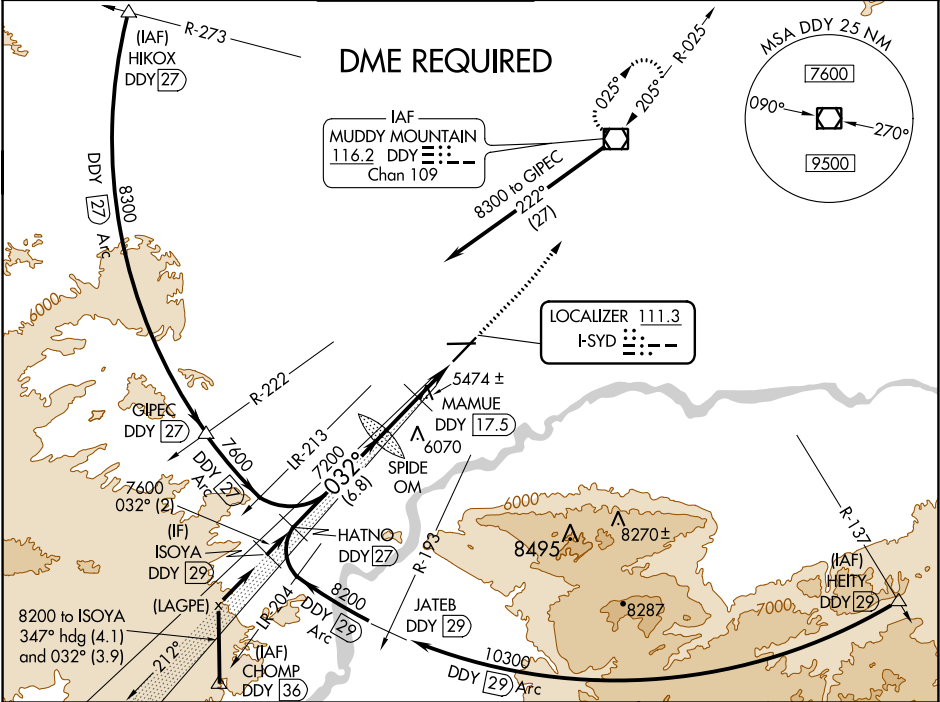
ILS or LOC RWY 3
CASPER/NATRONA COUNTY INTL (CPR)

⚠ DME from DDY VOR/DME. Simultaneous reception of I-SYD and DDY DME required. When local altimeter setting not received, use Douglas altimeter setting; increase DA to 5697 feet and all MDAs 180 feet, increase S-ILS visibility all Cats ¼ mile and S-LOC visibility Cats B, C, and D ½ mile, increase Circling visibility Cats B, C, and D ½ mile. For inoperative MALSRS when using Douglas altimeter setting increase S-ILS visibility all Cats to 1¼ mile. **MAMUE FIX MINIMUMS:** For inoperative MALSRS, increase S-LOC visibility Cats C, and D to 1½ mile.
#RVR 1800 authorized with use of FD or AP or HUD to DA.

MALSRS

MISSED APPROACH:
Climb to 7500
then left turn direct
DDY VOR/DME
and hold.

ATIS 126.15	CASPER APP CON ★ 120.65 354.1	CASPER TOWER ★ 118.3 (CTAF) 0 257.8	GND CON 121.9	CLNC DEL 121.9 257.8	UNICOM 122.95
-----------------------	---	---	-------------------------	--------------------------------	-------------------------



ISOYA *6400 when using Douglas altimeter setting. DDY 29					SPIDE OM		MAMUE DDY 17.5		DDY		ELEV 5344 D TDZE 5328	
8200					7183		7500		DDY 14.7		*LOC only	
GS 3.00° TCH 50					7600		7200		DDY 14.7		*LOC only	
2 NM					6.8 NM		2.9 NM		2.7 NM			
CATEGORY	A		B		C		D					
S-ILS 3	# 5528/24 200 (200-½)											
S-LOC 3	6220/40		892 (900-¾)		6220-2		892 (900-2)					
CIRCLING	6220-1¼		876 (900-1¼)		6220-2½ 876 (900-2½)		6220-2¾ 876 (900-2¾)					
MAMUE FIX MINIMUMS												
S-LOC 3	5740/24		412 (400-½)		5740/40		412 (400-¾)					
CIRCLING	5740-1		5800-1		5800-½		5900-2					
	396 (400-1)		456 (500-1)		456 (500-½)		556 (600-2)					
FAF to MAP 5.6 NM												
Knots		60	90	120	150	180						
Min:Sec		5:36	3:44	2:48	2:14	1:52						

NW-1, 31 DEC 2020 to 28 JAN 2021

NW-1, 31 DEC 2020 to 28 JAN 2021