

VOR/DME BZN	APP CRS	Rwy Idg	8994
112.4	104°	TDZE	4443
Chan 71		Apt Elev	4473

VOR RWY 12
BOZEMAN YELLOWSTONE INTL (BZN)

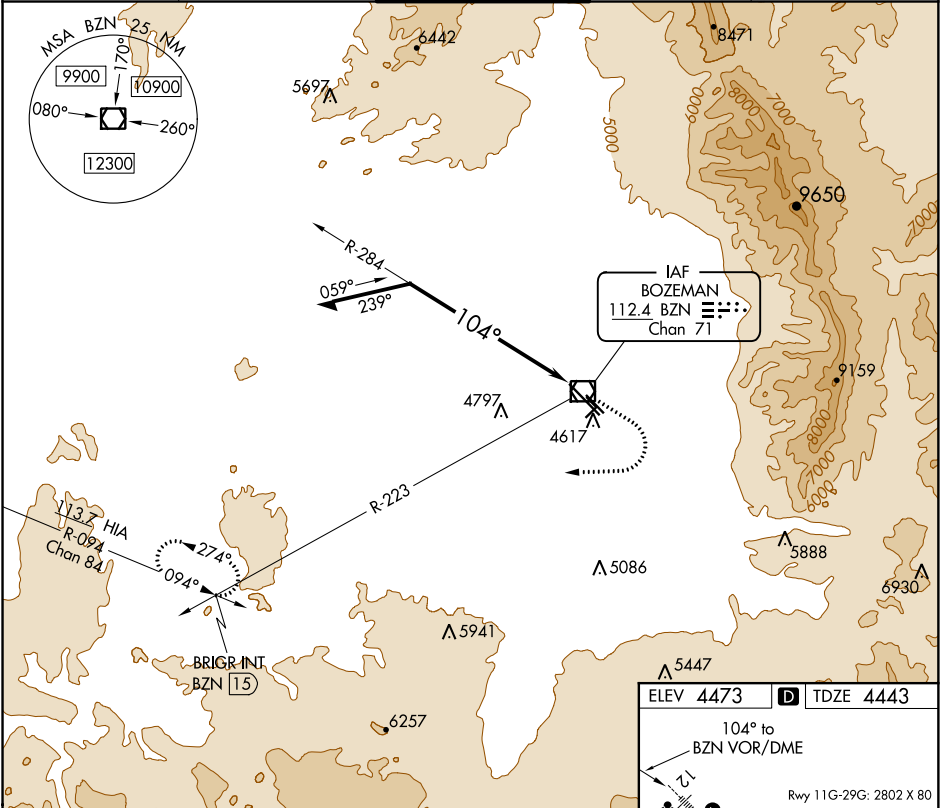
V
A
-31°C

Circling NA to Rwys 3-21 and 11-29.
Inop table does not apply.

MALSR

MISSED APPROACH: Climb to 5500 then climbing right turn to 8000 on heading 250° and BZN VOR/DME R-223 to BRIGR INT/15 DME and hold.

ATIS 135.425	BIG SKY APP CON★ 118.975 226.675	BOZEMAN TOWER★ 118.2 (CTAF) 0	GND CON 121.8	UNICOM 122.95
-----------------	-------------------------------------	----------------------------------	------------------	------------------



Remain within 10 NM

6700

284°

104°

BZN VOR/DME

10000

8000

BZN [3.5]

3 NM

5500

8000

hdg 250°

BZN R-223

BRIGR INT

ELEV 4473

TDZE 4443

104° to BZN VOR/DME

Rwy 11G-29G: 2802 X 80

8024 X 150

0.5% UP

0.4% UP

0.3% UP

0.3% DOWN

0.7% UP

TWR

REIL Rwy 30

HIRL Rwy 12-30

MIRL Rwy 11-29

NW-1, 31 DEC 2020 to 28 JAN 2021

NW-1, 31 DEC 2020 to 28 JAN 2021