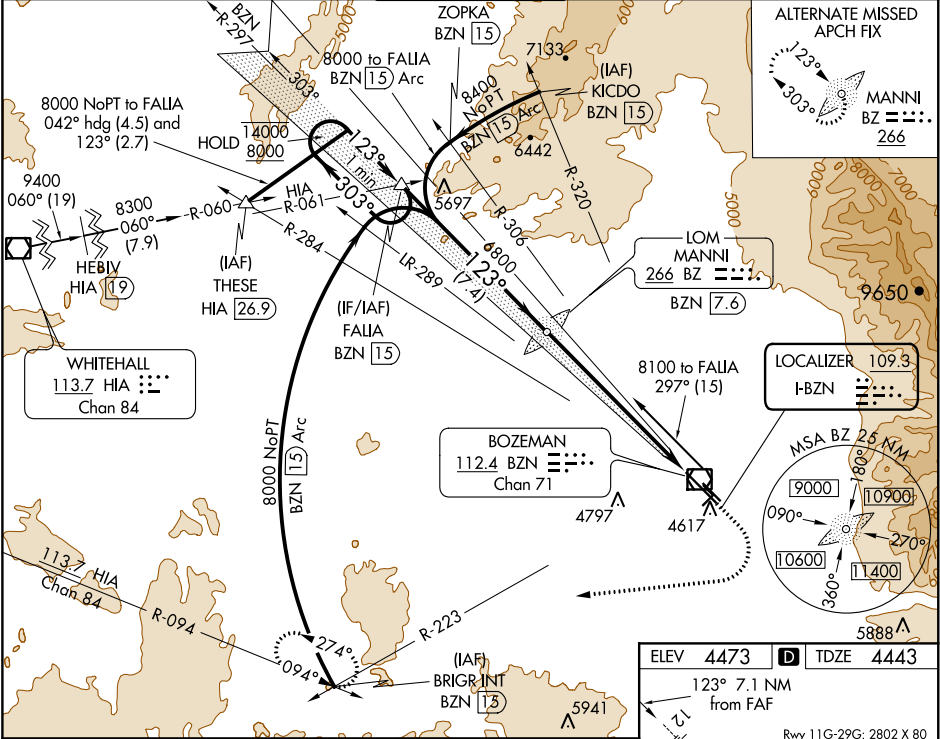


LOC I-BZN	APP CRS	Rwy Idg	8994
109.3	123°	TDZE	4443
		Apt Elev	4473

ILS or LOC RWY 12
BOZEMAN YELLOWSTONE INTL (BZN)

RADAR required for procedure entry at BRIGR.		MALSR	MISSED APPROACH: Climb to 5200 then climbing right turn to 8000 on heading 250° and on BZN VOR/DME R-223 to BRIGR INT/BZN 15 DME and hold.
Circling NA to Rwy 3-21 and 11-29.		A5	
-31°C			

ATIS 135.425	BIG SKY APP CON★ 118.975 226.675	BOZEMAN TOWER★ 118.2 (CTAF) 0	GND CON 121.8	UNICOM 122.95
-----------------	-------------------------------------	----------------------------------	------------------	------------------



One Minute Holding Pattern		FALIA BZN 15	5200	8000	BZN R-223	BRIGR INT	
			↑	hdg 250°			
			*LOC only				
14000 ← 303° 8000 → 123°			BZ LOM MANNI BZN 7.6	6781	*BZN 1.7	BZN 0.5	
GS 3.00° TCH 53				6800			
			7.4 NM	5.9 NM	1.2		
CATEGORY	A	B	C	D			
S-ILS 12	4643-½		200 (200-½)				
S-LOC 12	4860-½	417 (400-½)	4860-¾	417 (400-¾)			
CIRCLING	4940-1	467 (500-1)	5160-2 687 (700-2)	5360-3 887 (900-3)			

45

8094 X 130

0.5% UP

0.4% UP

0.3% UP

0.3% DOWN

0.7% UP

2658 X 75

30

29

TWR

REIL Rwy 30 0

HIRL Rwy 12-30 0

MIRL Rwy 11-29 0

FAF to MAP 7.1 NM

Knots	60	90	120	150	180
Min:Sec	7:06	4:44	3:33	2:50	2:22