

VORTAC BOI 113.3 Chan 80	APP CRS 278°	Rwy Idg TDZE Apt Elev	28L 9763 2853 2871	28R 10000 2871 2871
--	------------------------	-----------------------------	--	---

VOR/DME or TACAN RWY 28L

BOISE AIR TERMINAL/GOWEN FIELD (BOI)

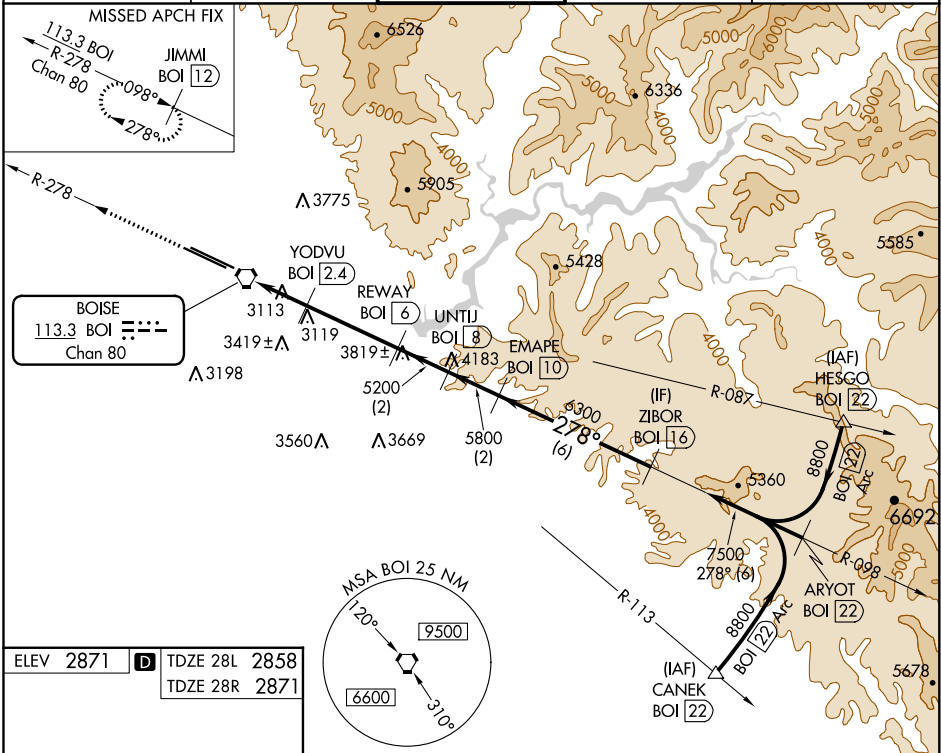
⚠ Circling NA north of Rwy 10L-28R. For inoperative MALSR increase S-28L Cat E visibility ½ mile.

MALSR
Rwy 28L

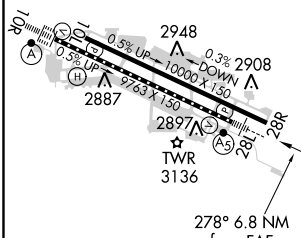


MISSED APPROACH: Climb to 4500 via BOI VORTAC R-278 to JIMMI/12 DME and hold.

D-ATIS 123.9 290.4	BIG SKY APP CON 119.6 269.4	BOISE TOWER 118.1 257.8	GND CON 121.7 348.6	CLNC DEL 125.9 323.2
------------------------------	---------------------------------------	-----------------------------------	-------------------------------	--------------------------------



ELEV 2871 **D** TDZE 28L 2858
TDZE 28R 2871



REIL Rwy 10L
TDZ/CL Rwy 10R and 28L
HIRL Rwy 10L-28R and 10R-28L

4500 ↑ BOI R-278	JIMMI BOI 12							
		YODVU BOI 2.4	REWAY BOI 6	UNTIJ BOI 8	EMAPE BOI 10	ZIBOR BOI 16		
BOI VORTAC		BOI 0.7	3.16° TCH 50		278°		7500	Procedure Turn NA
		3980	5200	5800	6300			
0.8		0.7	1.7 NM	3.6 NM	2 NM	2 NM	6 NM	
CATEGORY	A		B	C		D	E	
S-28L	3380/24		522 (600-½)	3380/50 522 (600-1)		3380/60	522 (600-1 ¼)	
SIDESTEP RWY 28R	3380/60		509 (600-1 ¼)	3380-1 ¾ 509 (600-1 ¾)		3380-2 ¼	509 (600-2 ¼)	
CIRCLING	3440-1		569 (600-1)	3440-1 ½ 569 (600-1 ½)		3440-2	3820-3	949 (1000-3)

NW-1, 31 DEC 2020 to 28 JAN 2021

NW-1, 31 DEC 2020 to 28 JAN 2021