

WAAS CH 77702 W28A	APP CRS 282°	Rwy Idg 9763 TDZE 2858 Apt Elev 2871
--	------------------------	---

RNAV (GPS) Y RWY 28L
BOISE AIR TERMINAL/GOWEN FIELD (BOI)

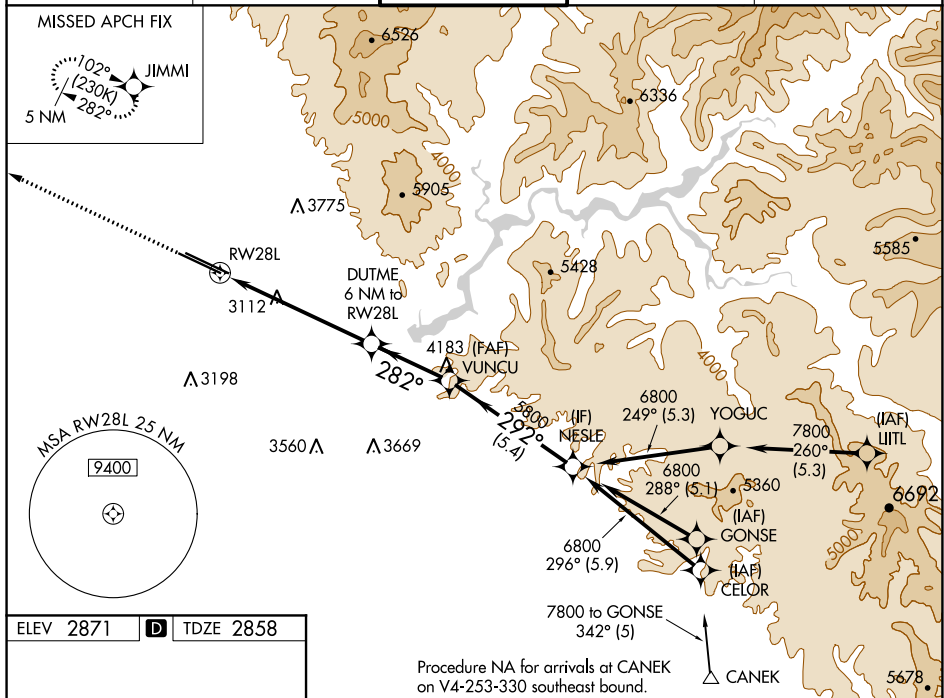
T For uncompensated Baro-VNAV systems, LNAV/VNAV NA below -12°C (11°F) or above 52°C (126°F). Circling NA north of Rwy 10L-28R. DME/DME RNP-0.3 NA. **A** For inop ALS, increase LPV alt Cats visibility to RVR 5000, LNAV/VNAV Cat E visibility to 1% SM, and LNAV Cat C/D/E visibility to 1% SM.



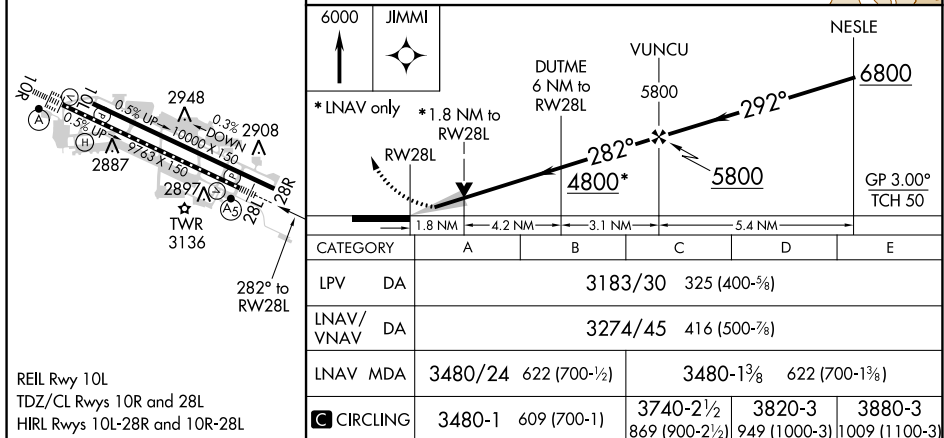
MISSED APPROACH: Climb to 6000 direct JIMMI and hold, continue climb-in-hold to 6000.

D-ATIS 123.9 290.4	BIG SKY APP CON 119.6 269.4	BOISE TOWER 118.1 257.8	GND CON 121.7 348.6	CLNC DEL 125.9 323.2
-----------------------	--------------------------------	----------------------------	------------------------	-------------------------

MISSED APCH FIX



Procedure NA for arrivals at CANEK
on V4-253-330 southeast bound.



BOISE, IDAHO

Amdt 5A 07DEC17

43°34'N-116°13'W

BOISE AIR TERMINAL / GOWEN FIELD (BOT)

RNAV (GPS) Y RWY 28L