

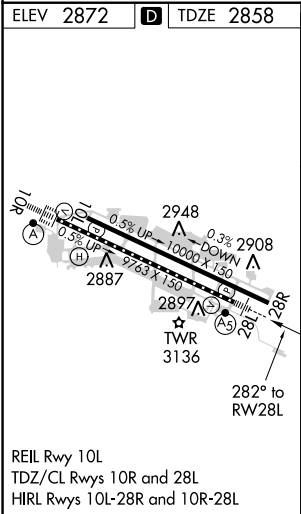
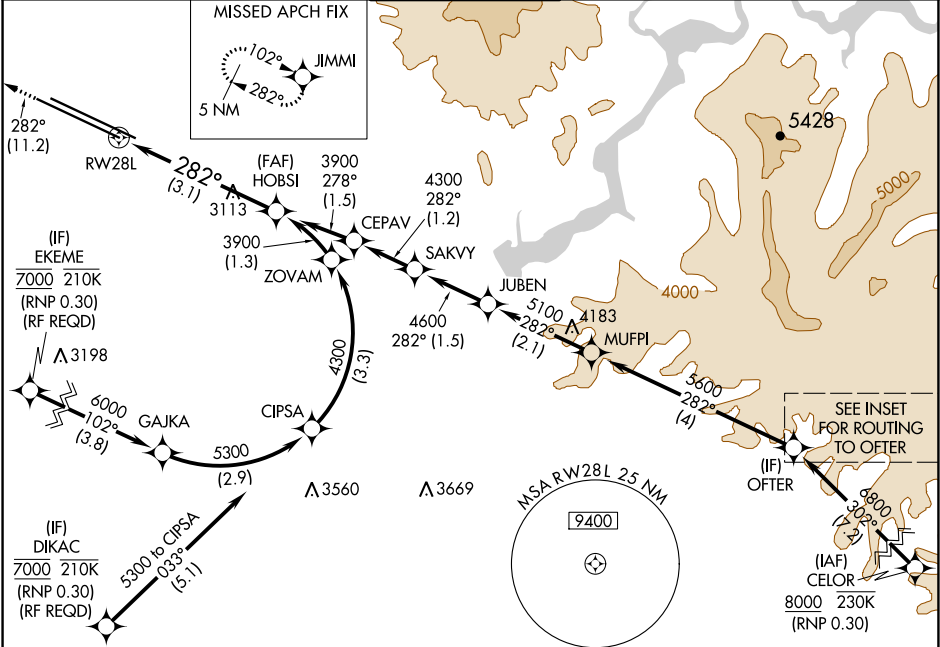
APP CRS	Rwy Idg	9763
282°	TDZE	2858
	Apt Elev	2872







RNAV (RNP) Z RWY 28L

BOISE AIR TERMINAL/GOWEN FIELD (BOI)

RNP AR APCH.	MALSR	MISSED APPROACH: Climb to 6000 on track 282° to JIMMI and hold, continue climb-in-hold to 6000.
▼ For uncompensated Baro-VNAV systems, procedure NA below -1.5°C or above 54°C. For inop ALS, increase RNP 0.15 all Cats visibility to RVR 5500 and increase RNP 0.30 all Cats visibility to 1 3/8 SM.		

D-ATIS 123.9 290.4	BIG SKY APP CON 119.6 269.4	BOISE TOWER 118.1 257.8	GND CON 121.7 348.6	CLNC DEL 125.9 323.2
-----------------------	--------------------------------	----------------------------	------------------------	-------------------------



 6800 262° (4)		 8000 262° (3.5)		 8500 262° (3.6)		 9000 250K (RNP 0.30)	
ROUTING TO OFTER (not to scale)							
6000 ↑ tr 282°				VGSI and RNAV glidepath not coincident (VGSI Angle 3.00/TCH 50). See planview for multiple IF locations.			
RW28L				282°		HOBSI 3900	
				3.1 NM		3900	
						GP 3.00° TCH 50	
CATEGORY	A		B		C		D
RNP 0.15 DA	3227/35		369 (400-%)				
RNP 0.30 DA	3319/50		461 (500-1)				
AUTHORIZATION REQUIRED							

AUTHORIZATION REQUIRED