
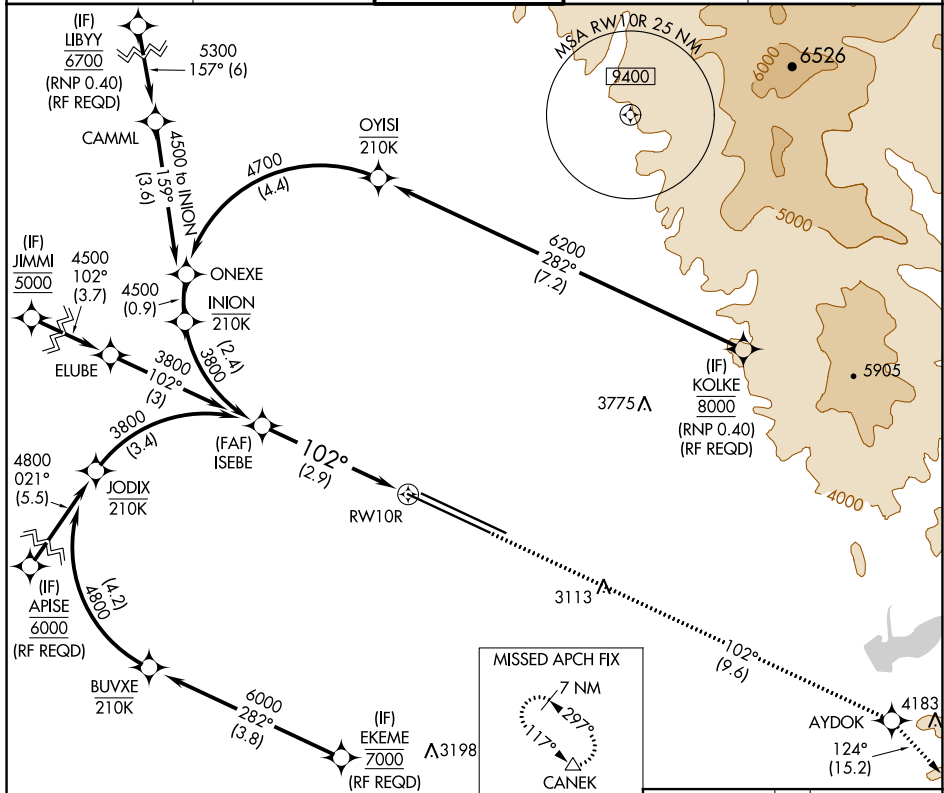


APP CRS 102°	Rwy Idg TDZE Apt Elev	9763 2836 2871
------------------------	-----------------------------	---

RNAV (RNP) Z RWY 10R
BOISE AIR TERMINAL/GOWEN FIELD (BOI)

<p>T For uncompensated Baro-VNAV systems, procedure NA below -14°C (7°F) or above 51°C (124°F). GPS required.</p>	<p>ALSIF-2</p> 	<p>MISSED APPROACH: Climb to 7300 on track 102° to AYDOK and on track 124° to CANEK and hold.</p>
--	--	---

D-ATIS	BIG SKY APP CON	BOISE TOWER	GND CON	CLNC DEL
123.9 290.4	119.6 269.4	118.1 257.8	121.7 348.6	125.9 323.2



VGS1 and RNAV glidepath not coincident
(VGS1 Angle 3.00°/TCH 64).

ISEBE
3800

3800
GP 3.00°
TCH 58

102°

2.9 NM

RW10R

7300
tr 102°

AYDOK

CANEK
tr 124°
△

See planview for multiple IF locations.

CATEGORY	A	B	C	D
RNP 0.15 DA		3163/30	327 (300- $\frac{3}{4}$)	
RNP 0.30 DA		3199/40	363 (400- $\frac{3}{4}$)	

AUTHORIZATION REQUIRED

