

APP CRS	Rwy Idg	10000
102°	TDZE	2844
	Apt Elev	2872

RNAV (RNP) Z RWY 10L

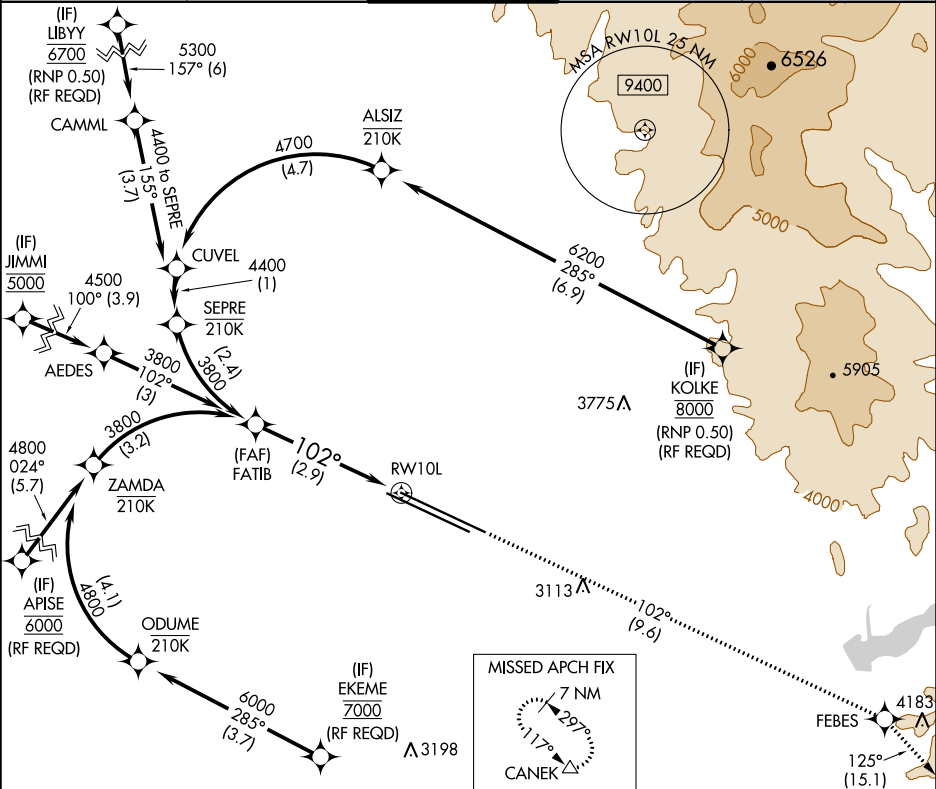
BOISE AIR TERMINAL/GOWEN FIELD (BOI)

RNP AR APCH.

▼ For uncompensated Baro-VNAV systems, procedure NA below -1.4°C or above 54°C .

MISSED APPROACH: Climb to 7300 on track 102° to FEBES and on track 125° to CANEK and hold.

D-ATIS	BIG SKY APP CON	BOISE TOWER	GND CON	CLNC DEL
123.9 290.4	119.6 269.4	118.1 257.8	121.7 348.6	125.9 323.2



See planview for multiple IF locations.

7300

FEBES

CANEK

tr 102°

tr 125°

△

GP 3.00°

TCH 53

3800

102°

RW10L

2.9 NM

CATEGORY	A	B	C	D
RNP 0.15 DA		3167-1⅛	323 (300-1⅛)	
RNP 0.30 DA		3219-1¼	375 (400-1¼)	

AUTHORIZATION REQUIRED

ELEV 2872

TDZE 2844

102° to RW10L

2948

2908

2887

2897

2811

287

REIL Rwy 10L

TDZ/CL Rws 10R and 28L

HIRL Rws 10L-28R and 10R-28L