

LOC/DME I-BOI	APP CRS	Rwy ldg	9763
111.1	102°	TDZE	2836
Chan 48		Apt Elev	2871

ILS Y RWY 10R (CAT II & III)  
BOISE AIR TERMINAL/GOWEN FIELD (BOI)

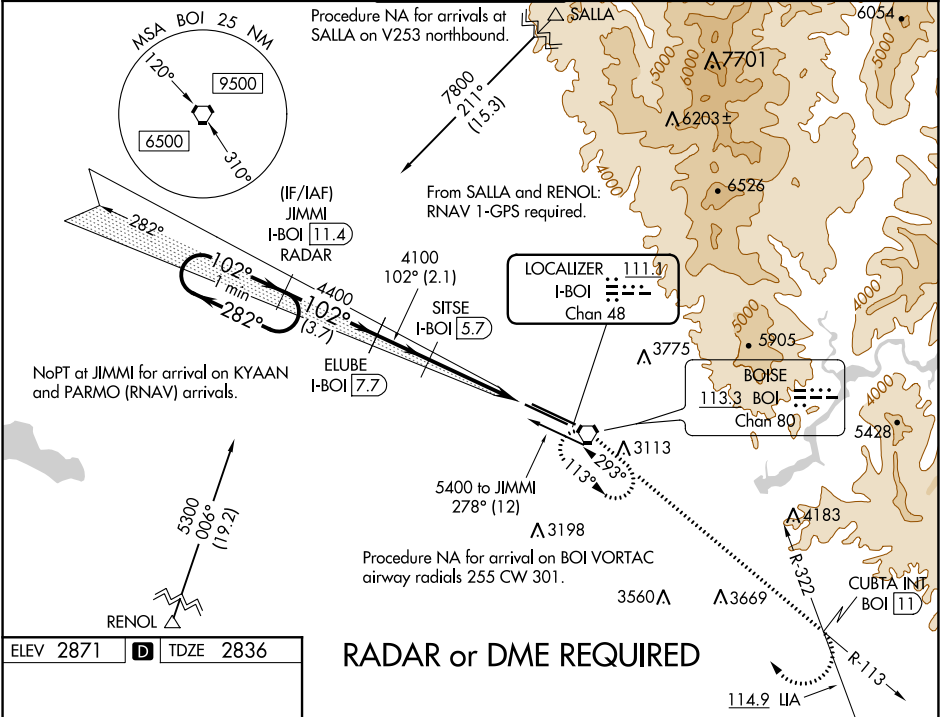
**V** DME required.

**Δ** CAT II: RVR 1000 authorized with specific OPSPEC, MSPEC, or LOA approval and use of autoland or HUD to touchdown.

ALSF-2

MISSED APPROACH: Climb to 6000 on BOI VORTAC R-113 to CUBTA INT/BOI VORTAC 11 DME and right turn direct BOI VORTAC and hold.

D-ATIS	BIG SKY APP CON	BOISE TOWER	GND CON	CLNC DEL
123.9 290.4	119.6 269.4	118.1 257.8	121.7 348.6	125.9 323.2



ELEV 2871	<b>D</b>	TDZE 2836
-----------	----------	-----------

RADAR or DME REQUIRED

VGSI and descent angles not coincident (VGSI Angle 3.00/TCH 64).

One Minute Holding Pattern

JIMMI I-BOI 11.4

ELUBE I-BOI 7.7

SITSE I-BOI 5.7

Use I-BOI DME when on the localizer course.

GS 3.00° TCH 58

5000

4100

4400

3.7 NM

2.1 NM

3.8 NM

97°

CATEGORY	A	B	C	D
S-ILS 10R	CAT II RA 102/12 100 DA 2936			
S-ILS 10R	CAT III RVR 03			

**CATEGORY II & III ILS - SPECIAL AIRCREW & AIRCRAFT CERTIFICATION REQUIRED**

REIL Rwy 10L  
TDZ/CL Rwy 10R and 28L  
HIRL Rwy 10L-28R and 10R-28L

NW-1, 31 DEC 2020 to 28 JAN 2021

NW-1, 31 DEC 2020 to 28 JAN 2021