

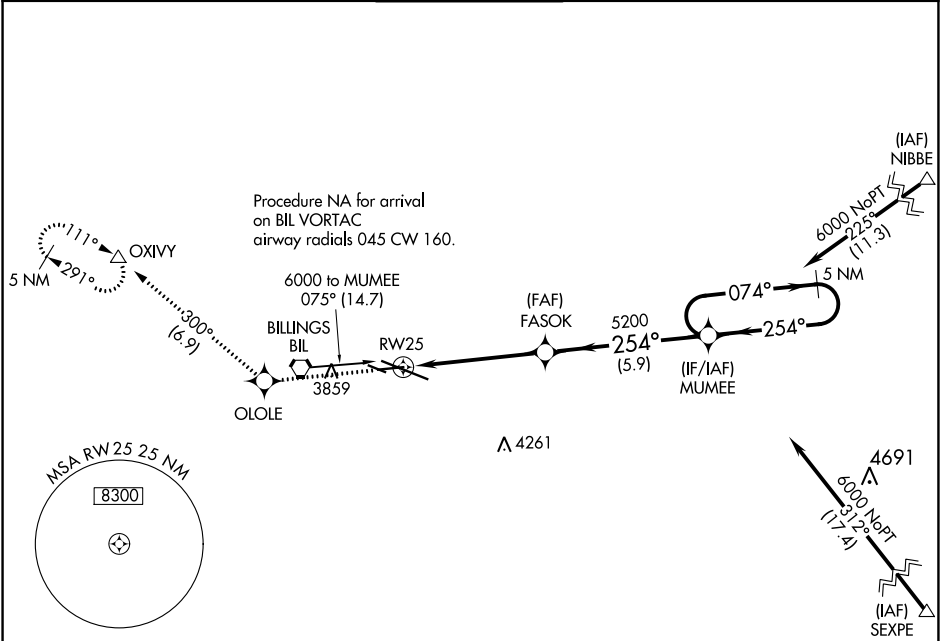
WAAS CH 78028 W25A	APP CRS 254°	Rwy Idg TDZE Apt Elev	5501 3586 3652
--	------------------------	-----------------------------	---

RNAV (GPS) RWY 25
BILLINGS LOGAN INTL (BIL)

⚠ For uncompensated Baro-VNAV systems, LNAV/VNAV NA below -25°C (-13°F) or above 54°C (130°F). DME/DME RNP-0.3 NA.

MISSED APPROACH: Climb to 6000 direct OLOLE and on track 300° to OXIVY and hold.

ATIS 126.3	BILLINGS APP CON 120.5 284.6	BILLINGS TOWER 127.2 257.8	GND CON 121.9	CLNC DEL 121.9
----------------------	--	---	-------------------------	--------------------------



ELEV **3652** **D** TDZE **3586**

Rwy 10R-10L: 3800 X 75
Rwy 7-25: 5501 X 75

REIL Rwy 25 and 28R
HIRL Rwy 10L-28R
MIRL Rwy 7-25 and 10R-28L

TWR 3707

3764

254° to RW25

0.8% DOWN

1.33% UP

1.9% UP

1.0% UP

10518 X 1500

28R

10R

6000	OLOLE	tr 300°	OXIVY	MUMEE	5 NM Holding Pattern
*LNAV only.					
*1.2 NM to RW25					
FASOK					
5200					
254°					
074°					
6000					
GP 3.00°					
TCH 36					
CATEGORY	A	B	C	D	
LPV DA	3836-1 250 (200-1)				
LNAV/VNAV DA	3920-1 3/8 334 (300-1 3/8)				
LNAV MDA	3960-1 374 (400-1)				
C CIRCLING	4100-1 448 (500-1)	4160-1 508 (600-1)	4180-1 1/2 528 (600-1 1/2)	4580-3 928 (1000-3)	

NW-1, 31 DEC 2020 to 28 JAN 2021

NW-1, 31 DEC 2020 to 28 JAN 2021