

WAAS CH 50122 W10A	APP CRS 102°	Rwy Idg TDZE 3585 Apt Elev 3652
--	------------------------	---

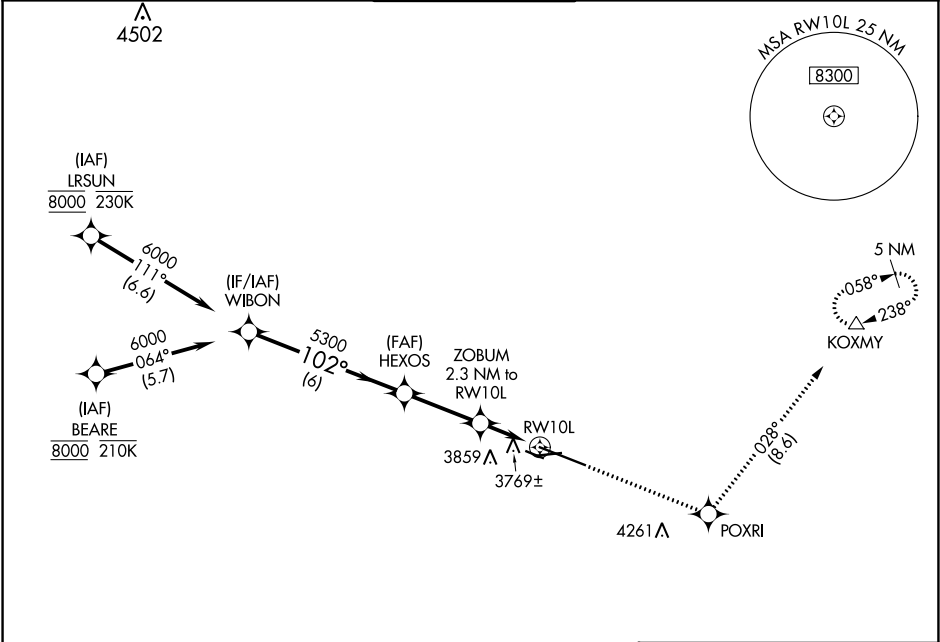
RNAV (GPS) RWY 10L
BILLINGS LOGAN INTL (BIL)

⚠ For uncompensated Baro-VNAV systems, LNAV/VNAV NA below -24°C (-11°F) or above 50°C (123°F). DME/DME RNP-0.3 NA.
RVR 1800 authorized with use of FD or AP or HUD to DA.

MALSR

MISSED APPROACH: Climb to 6000 direct POXRI and on track 028° to KOXMY and hold.

ATIS 126.3	BILLINGS APP CON 120.5 284.6	BILLINGS TOWER 127.2 257.8	GND CON 121.9	CLNC DEL 121.9
----------------------	--	--------------------------------------	-------------------------	--------------------------



ELEV 3652		D		TDZE 3585	
-----------	--	---	--	-----------	--

WIBON

6000

102°

5300

HEXOS

5300

ZOBUM 2.3 NM to RW10L

*1.3 NM to RW10L

RW10L

POXRI

tr 028°

KOXMY

*LNAV only.

GP 3.00° TCH 51

6 NM

2.9 NM

1 NM

1.3 NM

CATEGORY	A	B	C	D
LPV DA#	3785/24 200 (200-½)			
LNAV/VNAV DA	4041/60 456 (400-1¼)			
LNAV MDA	4020/24 435 (400-½)	4020/40 435 (400-¾)		
CIRCLING	4100-1 448 (500-1)	4160-1 508 (600-1)	4180-1½ 528 (600-½)	4580-3 928 (1000-3)

Rwy 10R-10L: 3800 X 75

Rwy 7-25: 5501 X 75

102° to RW10L

0.6% DOWN

1.3% UP

1.0% UP

10518 X 150

3764

TWR 3707

28R

REIL Rwy 25 and 28R

HIRL Rwy 10L-28R

MIRL Rwy 7-25 and 10R-28L

NW-1, 31 DEC 2020 to 28 JAN 2021

NW-1, 31 DEC 2020 to 28 JAN 2021