

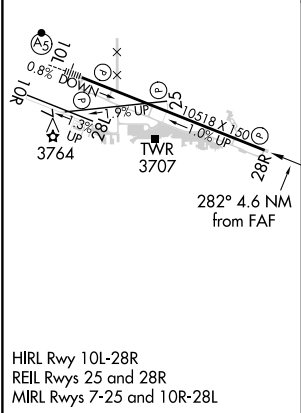
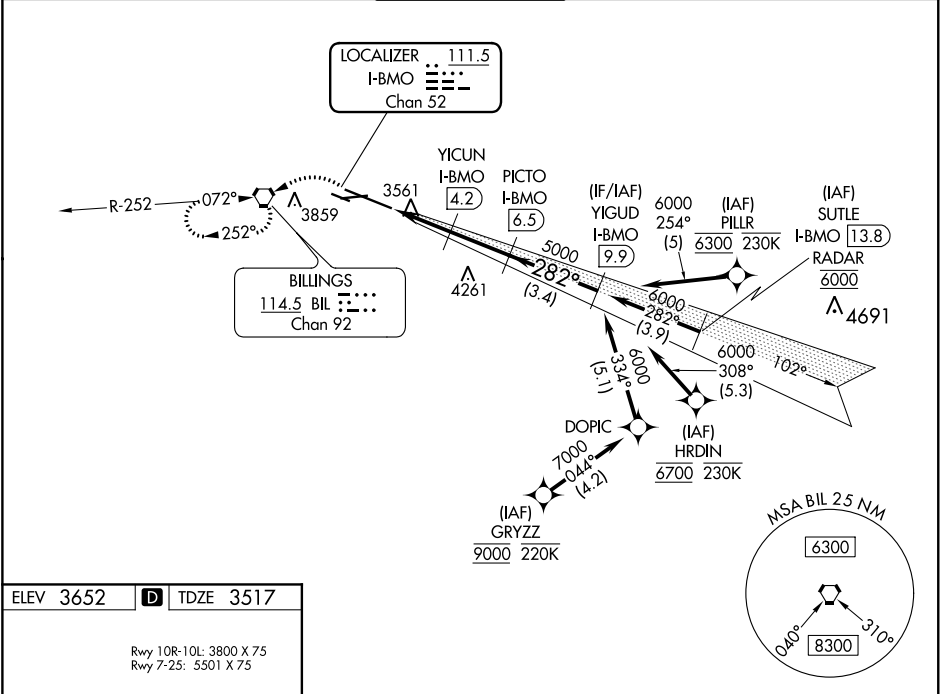
LOC/DME I-BMO 111.5 Chan 52	APP CRS 282°	Rwy ldg TDZE Apt Elev 10518 3517 3652
---	------------------------	---


ILS or LOC RWY 28R

BILLINGS LOGAN INTL (BIL)

RNAV 1. RNAV 1-GPS or RADAR required for procedure entry. DME required. From PILLR, GRYZZ, HRDIN: RNAV 1-GPS required.	MISSED APPROACH: Climb to 4000 then climbing left turn to 6000 direct BIL VORTAC and hold, continue climb-in-hold to 6000.
<div><div></div><div>Rwy 28R helicopter visibility reduction below ¾ SM NA.</div></div>	

ATIS 126.3	BILLINGS APP CON 120.5 284.6	BILLINGS TOWER 127.2 257.8	GND CON 121.9	CLNC DEL 121.9
----------------------	--	--------------------------------------	-------------------------	--------------------------



4000 ↑	6000 ↖	BIL 				
-----------	-----------	--	--	--	--	--