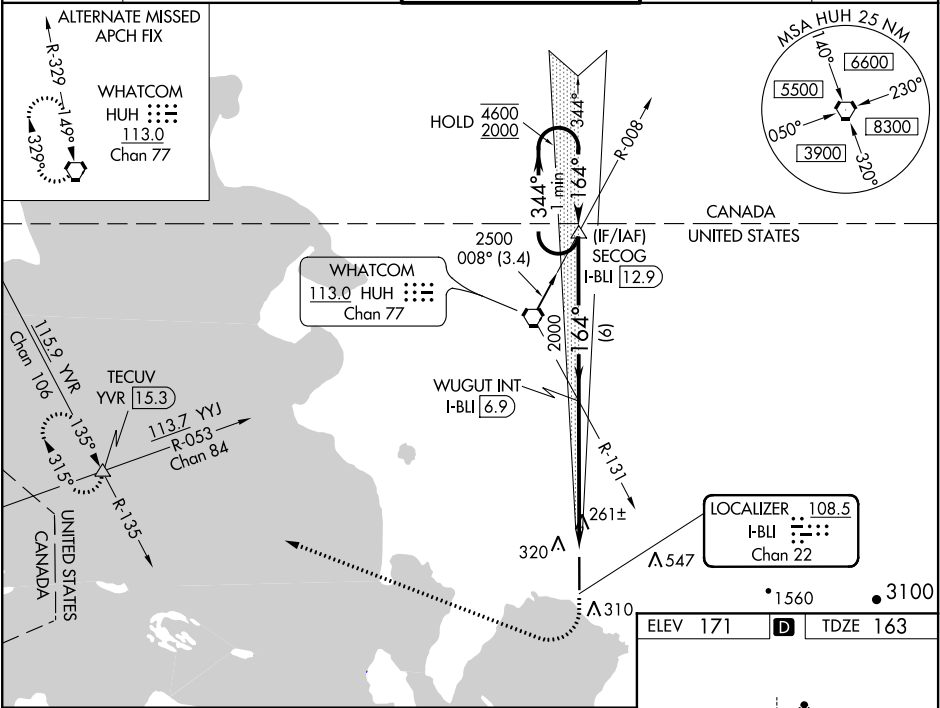


LOC/DME I-BLI 108.5 Chan 22	APP CRS 164°	Rwy Idg TDZE 163 Apt Elev 171
-------------------------------------------------	------------------------	---------------------------------------------------

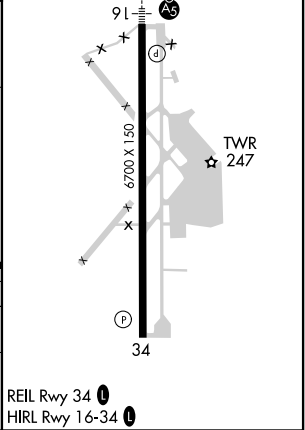
ILS RWY 16 (SA CAT I)
BELLINGHAM INTL (BLI)

DME or RADAR required.	MALSR 	MISSED APPROACH: Climb to 700 then climbing right turn to 2000 on heading 275° and on YVR VOR/DME R-135 to TECUV INT/YVR 15.3 DME and hold.
 Requires specific OPSPEC, MSPEC or LOA approval and use of HUD to DH.		

ATIS 134.45	VICTORIA TERMINAL APP CON 132.7 290.8	BELLINGHAM TOWER ★ 124.9 (CTAF) 379.3	GND CON 127.4 379.3	UNICOM 122.95
-----------------------	-------------------------------------------------	-------------------------------------------------	-------------------------------	-------------------------



One Minute Holding Pattern	SECOG I-BLI 12.9	WUGUT INT I-BLI 6.9	TECUV



NW-1, 31 DEC 2020 to 28 JAN 2021

NW-1, 31 DEC 2020 to 28 JAN 2021