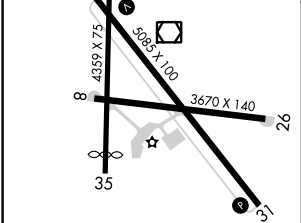
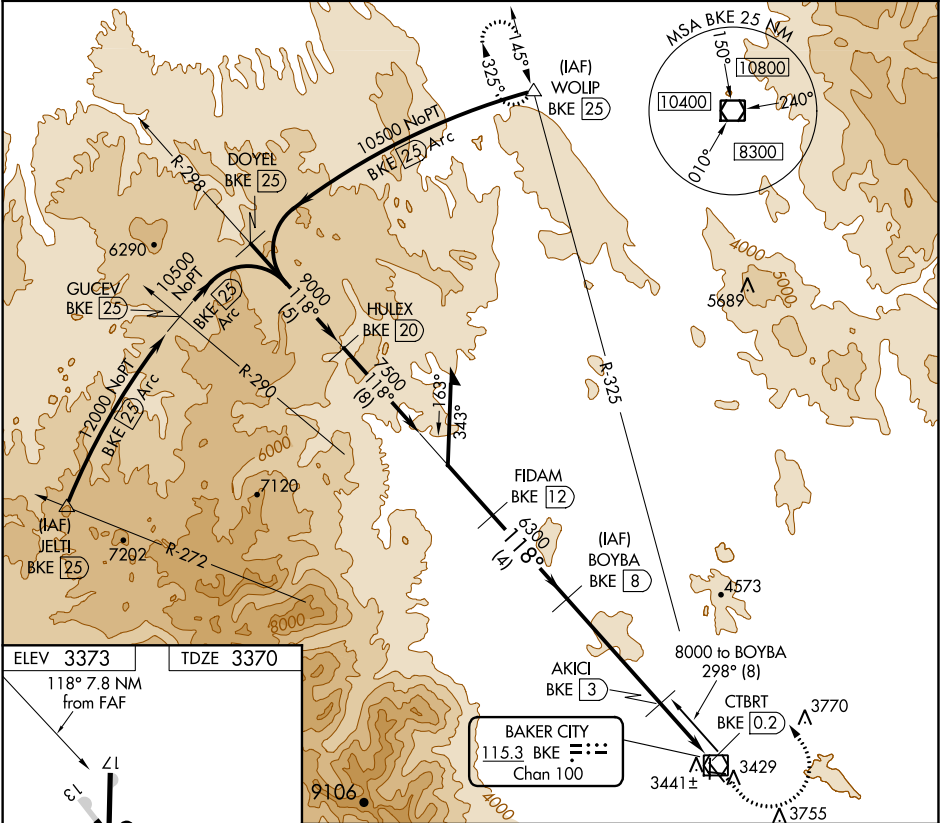



VOR/DME BKE	APP CRS	Rwy Idg	5085
115.3	118°	TDZE	3370
Chan 100		Apt Elev	3373

VOR/DME RWY 13
BAKER CITY MUNI (BKE)

<p>A Circling to Rwy 8/17/26/35 NA at night. B Helicopter visibility reduction below 1 SM NA.</p>	<p>MISSED APPROACH: Climb to 4000 then climbing left turn to 10500 via BKE R-325 to WOLUP and hold.</p>
---	---

ASOS 134.275	SALT LAKE CENTER 128.05 306.95	UNICOM 123.0 (CTAF) 0
-----------------	-----------------------------------	---------------------------------



Remain within 10 NM	BOYBA BKE 8		4000 ↑	10500 BKE R-325	WOLUP △
	298°	FIDAM BKE 12	AKICI BKE 3	CTBRT BKE 0.2	
8000	118°	7500	3.49° TCH 55	4440	
VGSI and descent angles not coincident (VGSI 3.00/TCH 55).					
	4 NM		5 NM	2.8 NM	
CATEGORY	A		B	C	D
S-13	4000-1 630 (700-1)		4000-1¾ 630 (700-1¾)	4000-2 630 (700-2)	
 CIRCLING	4000-1 627 (700-1)		4560-3 1187 (1200-3)	4720-3 1347 (1400-3)	

NW-1, 31 DEC 2020 to 28 JAN 2021

NW-1, 31 DEC 2020 to 28 JAN 2021