

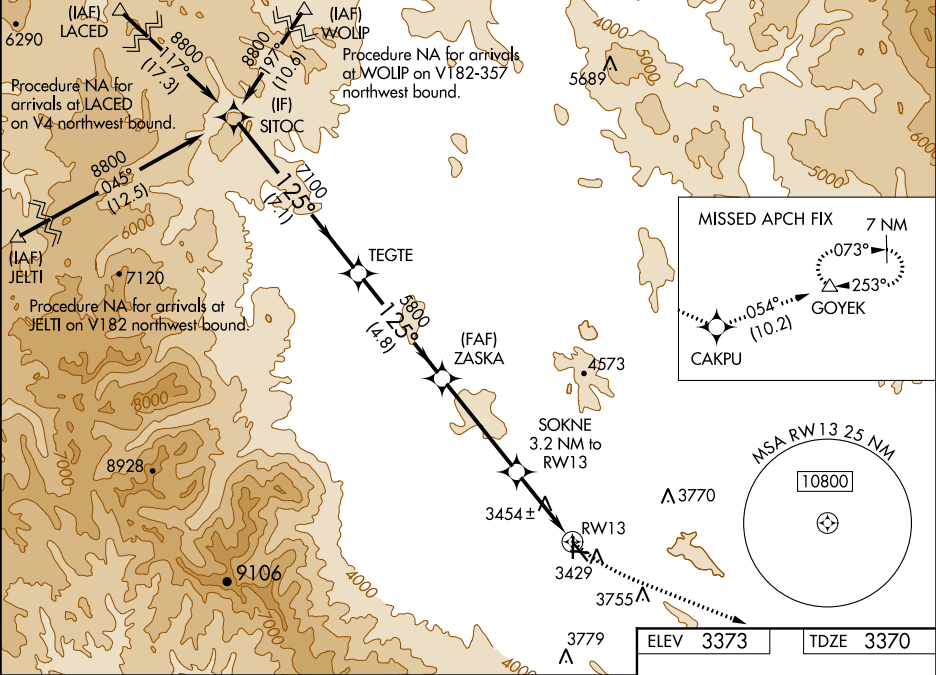
WAAS CH 90133 W13A	APP CRS 125°	Rwy Idg TDZE Apt Elev	5085 3370 3373
--	------------------------	-----------------------------	---

RNAV (GPS) RWY 13
BAKER CITY MUNI (BKE)

⚠ For uncompensated Baro-VNAV systems, LNAV/VNAV NA below -22°C (-7°F) or above 51°C (124°F). Rwy 13 helicopter visibility reduction below ¾ SM NA. DME/DME RNP-0.3 NA. Circling Rwy 8, 17, 26, and 35 NA at night.

MISSED APPROACH: Climb to 3800 then climbing left turn to 11000 direct CAKPU and on track 054° to GOYEK and hold, continue climb-in-hold to 11000. # Missed approach requires minimum climb of 266 feet per NM to 4580.

ASOS 134.275	SALT LAKE CENTER 128.05 306.95	UNICOM 123.0 (CTAF)
------------------------	--	-------------------------------



SITOC		TEGTE		3800	11000	CAKPU	GOYEK
8800		7100		5800	5800	3.2 NM to *2.4 NM to RW13	tr 054°
GP 3.00°		TCH 55		*4420			
7.1 NM		4.8 NM	4.3 NM	0.8 NM	2.4 NM		
CATEGORY	A	B	C	D			
LPV DA #	3621-¾		251 (300-¾)				
LPV DA	3833-1½		463 (500-1½)				
LNAV/VNAV DA	3916-1⅞		546 (600-1⅞)				
LNAV MDA	4200-1 830 (900-1)	4200-1¼ 830 (900-1¼)	4200-2½	830 (900-2½)			
CIRCLING	4200-1¼	827 (900-1¼)	4560-3 1187 (1200-3)	4720-3 1347 (1400-3)			

