

FORT INDIANTOWN GAP, PENNSYLVANIA

COPTER RNAV (GPS) RWY 25

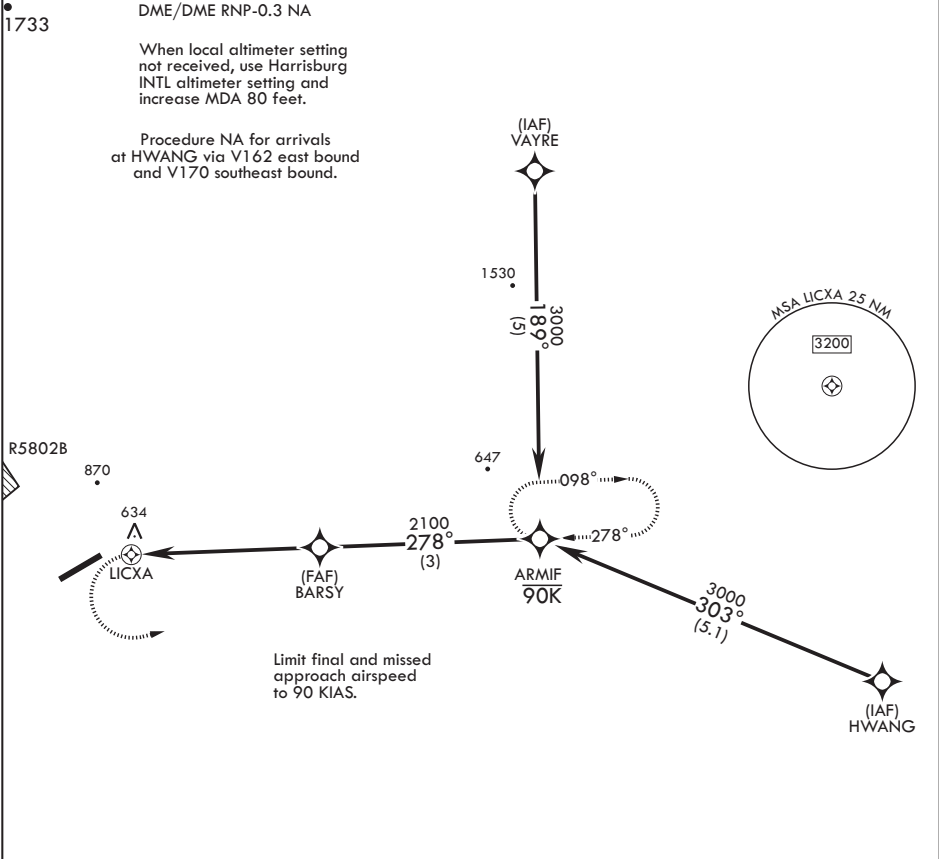
APCH CRS	Rwy Idg	3860
278°	TDZE	487
	Arprt Elev	487

AL-6422 (USA)

MUIR AAF (KMUI)

		MISSED APPROACH: Climbing left turn to 3000 direct ARMIF WPT and hold.	
--	--	--	--

ASOS 124.175	HARRISBURG APP CON/DEP CON 118.25 269.45	TOWER ★ 126.2 (CTAF) 0★ 290.5	GND CON 121.625 269.525
-----------------	---	----------------------------------	----------------------------



		VGS and descent angles not coincident.	
VDP NA when using Harrisburg INTL altimeter setting.		ARMIF	
		ARMIF	
CATEGORY		COPTER	
LNAV MDA		1060-1/2 573 (600-1/2)	
FORT INDIANTOWN GAP, PENNSYLVANIA		40°26'N - 76°34'W	
Amdt 1A 10SEP20		MUIR AAF (KMUI)	

COPTER RNAV (GPS) RWY 25