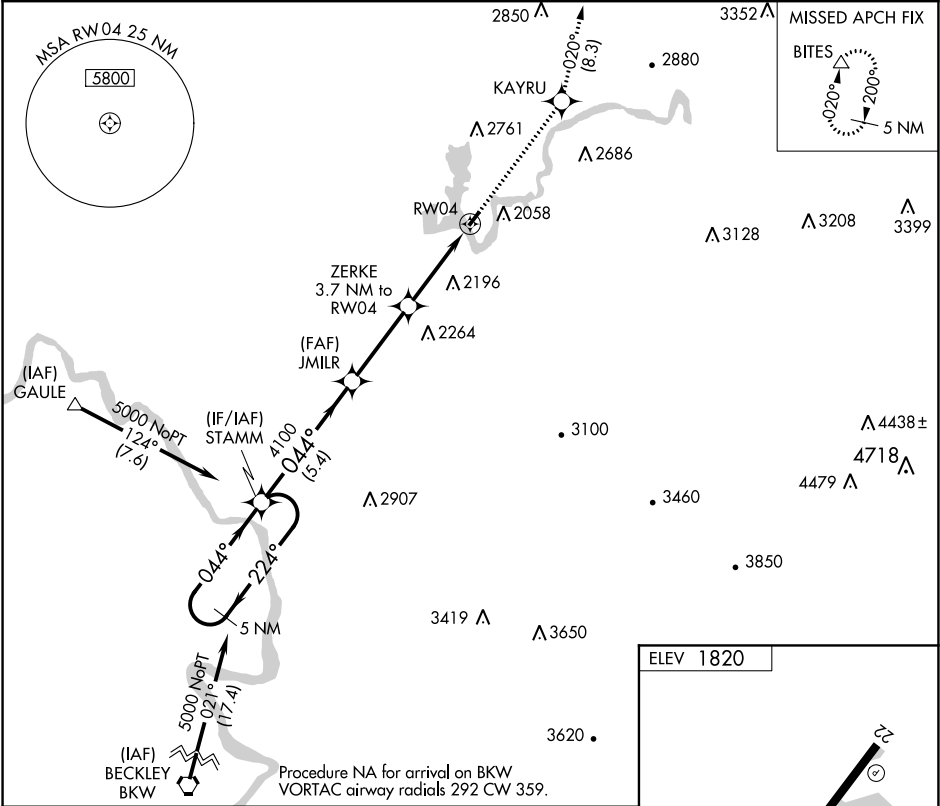


APP CRS	Rwy Idg	NA
044°	TDZE	NA
	Apt Elev	1820

RNAV (GPS)-A
SUMMERSVILLE (SXL)

<p>V NA</p> <p>Rwy 4, 22 helicopter visibility reduction below 1 SM NA. DME/DME RNP-0.3 NA. Procedure NA at night. Use Charleston altimeter setting.</p>	<p>MISSED APPROACH: Climb to 4500 direct KAYRU and on track 020° to BITES and hold.</p>
---	---

CRW ASOS 127.6	CHARLESTON APP CON 119.2 269.125	UNICOM 122.8 (CTAF) 0
-------------------	-------------------------------------	---------------------------------



5 NM Holding Pattern	STAMM	JMLR	ZERKE 3.7 NM to RW04	KAYRU	4500	BITES
5000	224°	044°	044°	2.97° TCH 50	3020	tr 020°
5.4 NM	3.4 NM	3.7 NM				
CATEGORY	A	B	C	D		
CIRCLING	2640-1¼ 820 (900-1¼)	3020-1½ 1200 (1300-1½)	NA			
						MIRL Rwy 4-22 0 REIL Rwy 4 and 22

NE-4, 31 DEC 2020 to 28 JAN 2021

NE-4, 31 DEC 2020 to 28 JAN 2021