

APP CRS
059°

Rwy Idg
5001

TDZE
819

Apt Elev
819

RNAV (GPS) RWY 6

MIFFLIN COUNTY (RVL)

RNP APCH.

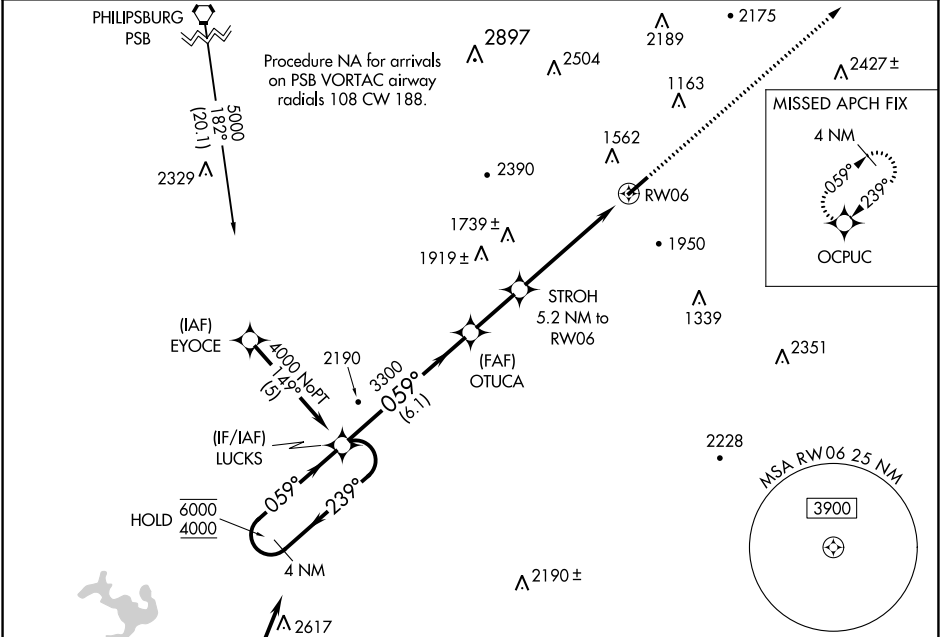
Circling NA NW of Rwy 6-24. Rwy 6 helicopter visibility reduction below ¾ SM NA. VDP NA when using State College altimeter setting. When local altimeter setting not received, use State College altimeter setting and increase all MDAs 100 feet.

MISSED APPROACH:
Climb to 4000 direct OCPUC and hold.

AWOS-3PT
123.85

NEW YORK CENTER
134.8 338.3

UNICOM
122.7 (CTAF) 0



ELEV 819

TDZE 819

4000

OCPUC

5001 x 75

059° to RW06

REIL Rwy 6 and 24 0

MIRL Rwy 6-24 0

4 NM Holding Pattern

LUCKS

OTUCA

STROH 5.2 NM to RW06

2.2 NM to RW06

RW06

6.1 NM

2.3 NM

3 NM

2.2

3300

2520

3.06°

TCH 36

059°

239°

6000

4000

VGSI and descent angles not coincident (VGSI Angle 4.00/TCH 48).

4000

OCPUC

CATEGORY	A	B	C	D
RNAV MDA	2180-1¼ 1361 (1400-1¼)	2180-1½ 1361 (1400-1½)	2180-3 1361 (1400-3)	
CIRCLING	2180-1¼ 1361 (1400-1¼)	2180-1½ 1361 (1400-1½)	2180-3 1361 (1400-3)	2360-3 1541 (1600-3)