

RNP APCH

▼

Baro-VNAV NA when using Pottstown altimeter setting. For uncompensated Baro-VNAV systems, LNAV/VNAV NA below -15°C (5°F) or above 54°C (130°F). When local altimeter setting not received, use Pottstown altimeter setting and increase all DA 35 feet and all MDA 40 feet; increase LPV Cats A/B visibility ¼ mile. Rwy 6 helicopter visibility reduction below ¾ SM NA.

▲

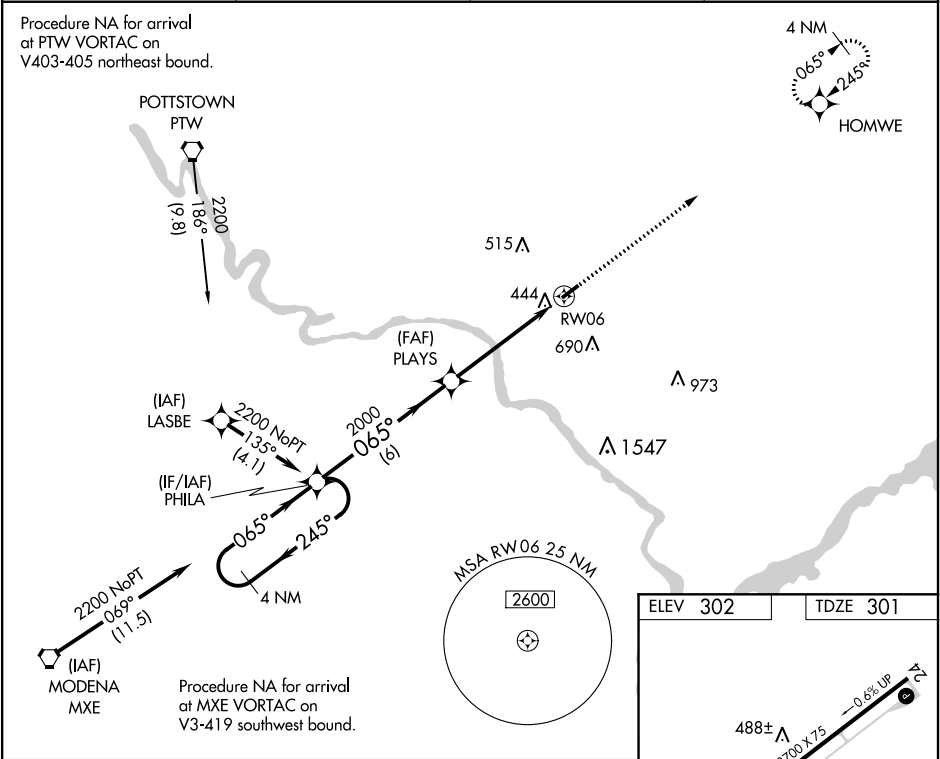
MISSED APPROACH: Climb to 2000 direct HOMWE and hold.

AWOS-3  
**118.925**

PHILADELPHIA APP CON  
**126.85 263.125**

CLNC DEL  
**118.55**

UNICOM  
**123.0** (CTAF) **1**



4 NM Holding Pattern		VGSI and RNAV glidepath not coincident (VGSI Angle 3.00/TCH 40).		2000	HOMWE
2200 ← 245°		PHILA		↑	✧
065° →		PLAYS		RWY 06	
GP 3.00°		2000		065° to RWY 06	
TCH 62		6 NM		5.1 NM	
CATEGORY	A	B	C	D	
LPV DA	614-1	313 (400-1)		NA	
LNAV/VNAV DA	788-1¾	487 (500-1¾)		NA	
LNAV MDA	720-1	419 (500-1)		NA	
CIRCLING	780-1	478 (500-1)		NA	

REIL Rwy 6 and 24 **1**  
MIRL Rwy 6-24 **1**