

WAAS

CH **90107**

W27A

APP CRS

273°

Rwy Idg

5004

TDZE

1184

Apt Elev

1184

RNAV (GPS) RWY 27

WASHINGTON COUNTY (AFJ)

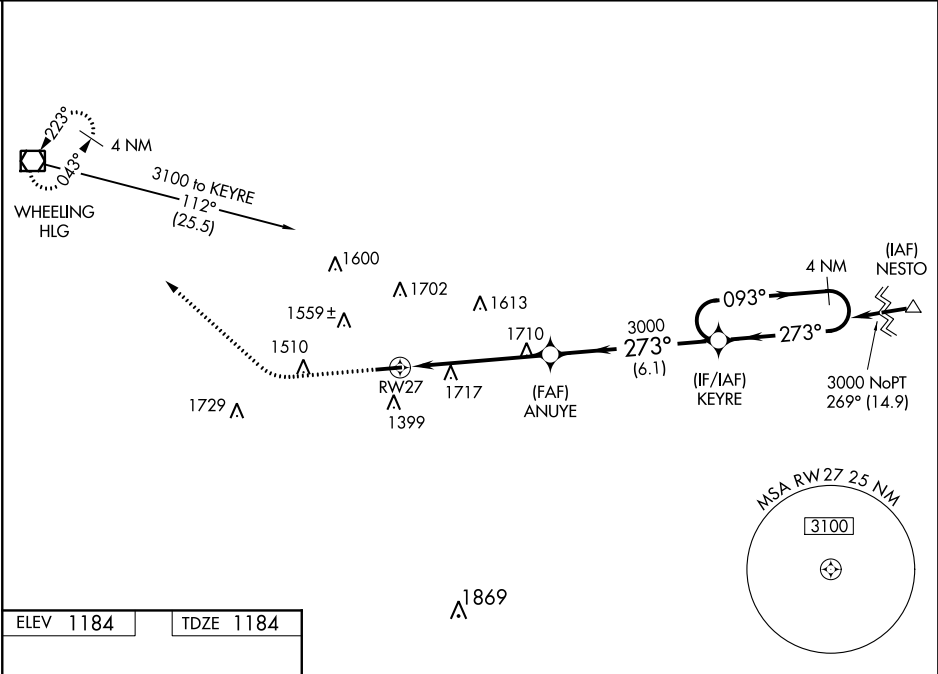
▼

▲

For uncompensated Baro-VNAV systems, LNAV/VNAV NA below -17°C (2°F) or above 45°C (114°F). DME/DME RNP-0.3 NA. Helicopter visibility reduction below ¼ SM NA. Night Landing: Rwy 9 NA. VDP and Baro-VNAV NA when using Wheeling altimeter setting. When local altimeter setting not received, use Wheeling altimeter setting and increase all DA/MDA 40 feet, increase Circling Cat A and Cat D visibility ¼ mile.

MISSED APPROACH: Climb to 1700 then climbing right turn to 3300 direct HLG VOR/DME and hold.

AWOS-3PT 119.175	PITTSBURGH APP CON 119.35 285.575	CLNC DEL 127.3	UNICOM 122.975 (CTAF) 0
----------------------------	---	--------------------------	-----------------------------------



ELEV **1184**

TDZE **1184**

1700

3300

HLG

VGSI and RNAV glidepath not coincident (VGSI Angle 3.09°/TCH 62).

*LNAV only.

ANUYE

KEYRE

3000

273°

093°

3000

4 NM Holding Pattern

2.3

3.1 NM

6.1 NM

GP 3.09°

TCH 57

CATEGORY	A	B	C	D
LPV DA		1386-¾	202 (300-¾)	
LNAV/VNAV DA		2140-4	956 (1000-4)	
LNAV MDA	1980-1 796 (800-1)	1980-1¼ 796 (800-1¼)	1980-2½ 796 (800-2½)	
CIRCLING	1980-1 796 (800-1)	1980-1¼ 796 (800-1¼)	1980-2½ 796 (800-2½)	2040-2¾ 856 (900-2¾)

WASHINGTON, PENNSYLVANIA

Amdb 1B 02APR15

40°08'N-80°17'W

WASHINGTON COUNTY (AFJ)

RNAV (GPS) RWY 27