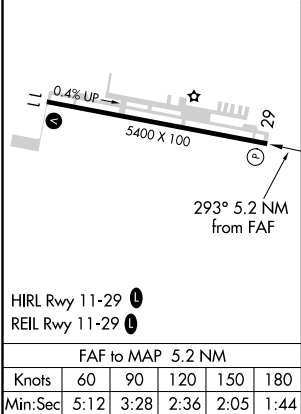
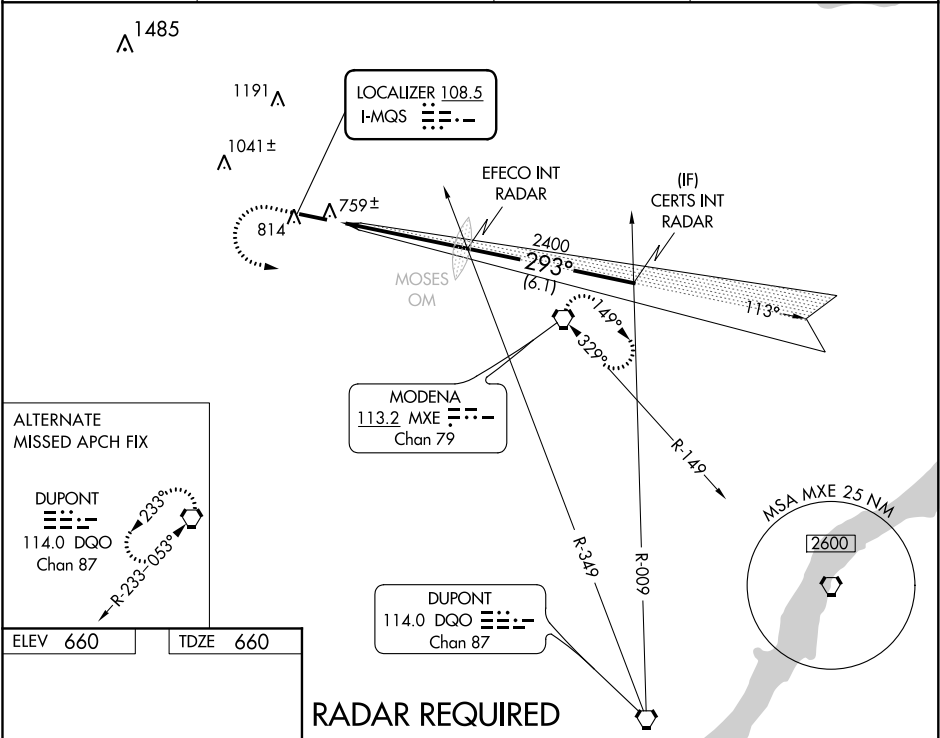


LOC I-MQS 108.5	APP CRS 293°	Rwy Idg TDZE 5400 Apt Elev 660
---------------------------	------------------------	--

ILS or LOC RWY 29
CHESTER COUNTY G O CARLSON (MQS)

<div><div><div></div><div></div><div></div></div><div><div></div><div></div><div></div></div></div> <div><div></div><div></div><div></div></div>	Rwy 29 helicopter visibility reduction below ¾ SM NA. When local altimeter setting not received, use Pottstown-Limerick altimeter setting and increase all DA 98 feet, and all MDA 100 feet, S-ILS 29 visibility ¼ mile all Cats, S-LOC 29 visibility Cats C and D ¼ mile, and Circling visibility Cat C and D ¼ mile.		MISSED APPROACH: Climb to 1300 then climbing left turn to 2400 direct MXE VORTAC and hold.
AWOS-3 126.25	PHILADELPHIA APP CON 124.35 319.15	CLNC DEL 125.6	UNICOM 122.7 (CTAF) 0



RADAR REQUIRED				
1300	2400	MXE	EFECO INT RADAR	CERTS INT RADAR
↑	↶	⬡	293°	2400
5.2 NM		6.1 NM		GS 3.00° TCH 56
CATEGORY	A	B	C	D
S-ILS 29	919-1 259 (300-1)			
S-LOC 29	1040-1 380 (400-1)			1040-1¼ 380 (400-1¼)
CIRCLING	1140-1	480 (500-1)	1220-1½ 560 (600-1½)	1260-2 600 (600-2)