

WAAS CH <b>70539</b> <b>W06A</b>	APP CRS <b>056°</b>	Rwy Idg <b>8222</b> TDZE <b>1199</b> Apt Elev <b>1199</b>
--	------------------------	---

RNAV (GPS) RWY 6

ARNOLD PALMER RGNL (LBE)

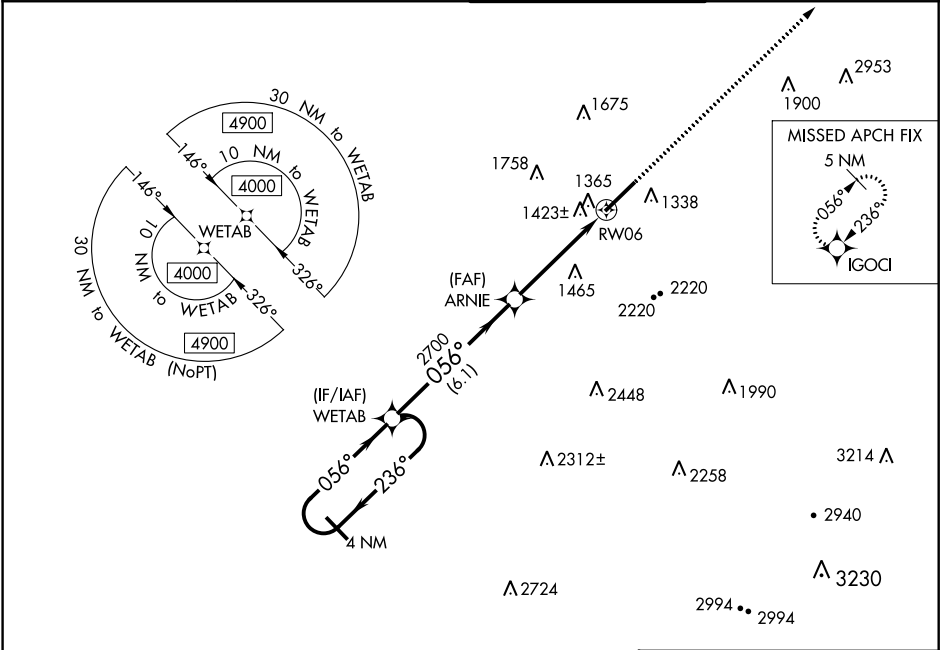
⚠

⚠

For uncompensated Baro-VNAV systems, LNAV/VNAV NA below -17°C (2°F) or above 54°C (130°F). Circling NA southeast of Rwy 6-24.  
Rwy 6 helicopter visibility reduction below ¾ SM NA. DME/DME RNP-0.3 NA.

MISSED APPROACH:  
Climb to 4200 direct  
IGOCI and hold.

ATIS <b>118.375</b>	JOHNSTOWN APP CON★ <b>121.2 299.2</b>	PALMER TOWER★ <b>125.0 (CTAF) 0</b>	GND CON <b>121.8</b>
------------------------	--	--	-------------------------



ELEV 1199

TDZE 1199

4 NM Holding Pattern

WETAB

ARNIE

RW06

4200 IGOCI

GP 3.00° TCH 45

\*1.4 NM to RW06

\*LNAV only.

6.1 NM

3.2 NM

1.4 NM

CATEGORY	A	B	C	D
LPV DA		1449-¾	250 (300-¾)	
LNAV/VNAV DA		1716-1¾	517 (600-1¾)	
LNAV MDA	1680-1	481 (500-1)	1680-1¾	481 (500-1¾)
CIRCLING	1740-1 541 (600-1)	1780-1 581 (600-1)	2060-2½ 861 (900-2½)	2060-2¾ 861 (900-2¾)

REIL Rwy 6

HIRL Rwy 6-24