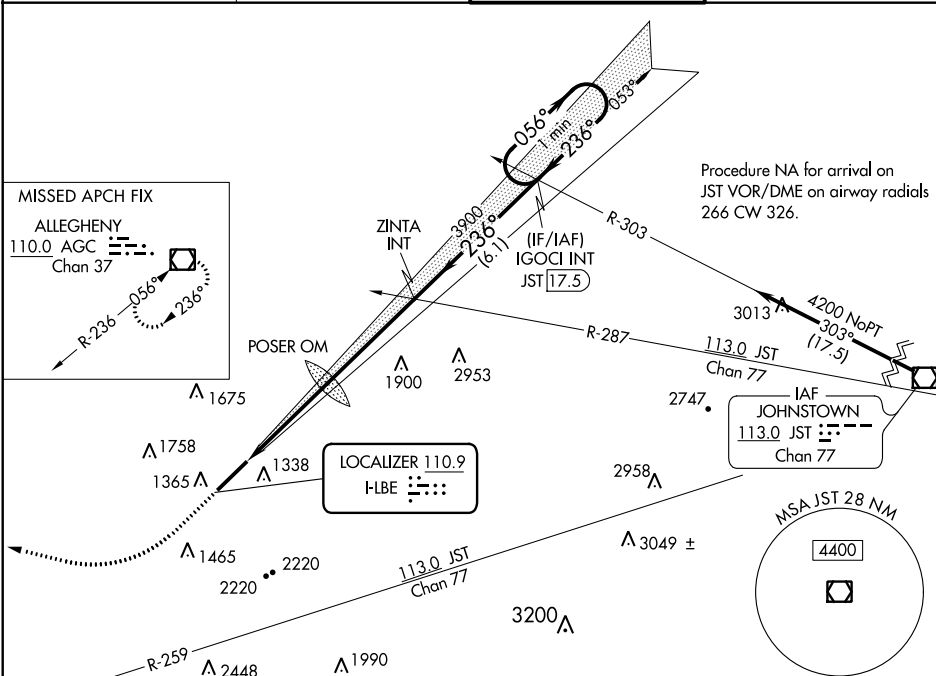


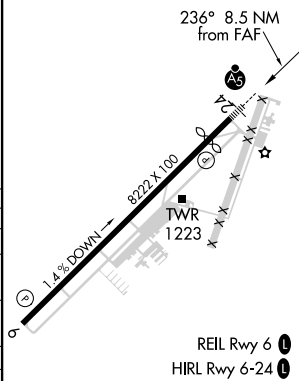
# ILS or LOC RWY 24

**MISSED APPROACH:** Climb to 2000 then climbing right turn to 5000 direct AGC VOR/DME and hold.

GND CON  
**121.8**



ELEV 1199	<b>D</b>	TDZE 1145
-----------	----------	-----------



CATEGORY	A	B	C	D
S-ILS 24	1345-½ 200 (200-½)			
S-LOC 24	2380-¾ 1235 (1200-¾)	2380-1 1235 (1200-1)	2380-3 1235 (1200-3)	
C CIRCLING	2380-1¼ 1181 (1200-1¼)	2380-1½ 1181 (1200-1½)	2380-3 1181 (1200-3)	
POSER OM MINIMUMS				
S-LOC 24	1760-½ 615 (600-½)		1760-1⅜ 615 (600-1⅜)	
C CIRCLING	1760-1 561 (600-1)	1780-1 581 (600-1)	2060-2½ 861 (900-2½)	2060-2¾ 861 (900-2¾)

ARNOLD PALMER RGNL (LBE)  
ILS or LOC RWY 24