

WAAS CH 82116 W07A	APP CRS 072°	Rwy Idg TDZE Apt Elev 1817	5503 1817 1817
--	------------------------	--	---

RNAV (GPS) RWY 7

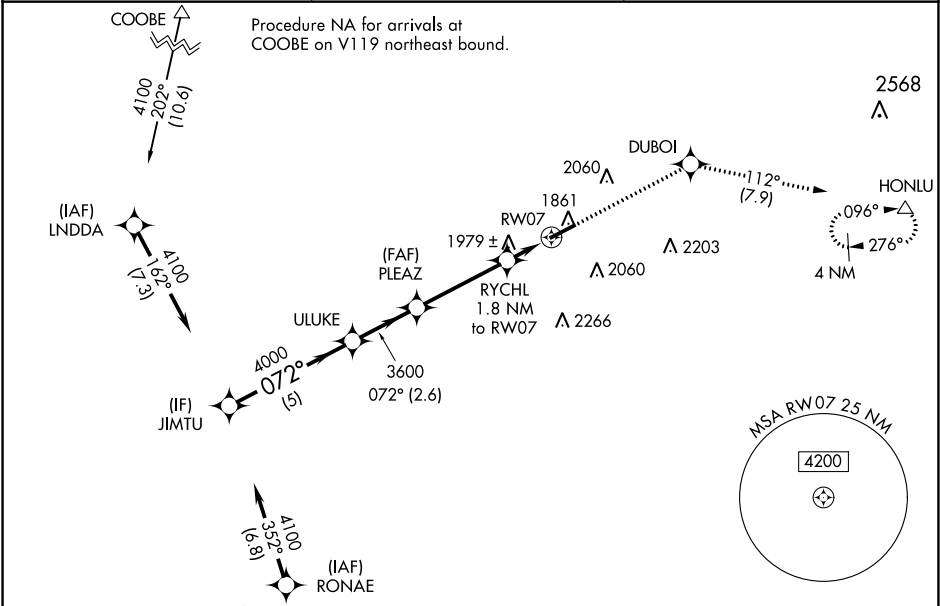
DUBOIS RGNL (DUJ)

RNP APCH.

For uncompensated Baro-VNAV systems, LNAV/VNAV NA below -20°C or above 54°C.

MISSED APPROACH: Climb to 4200 direct DUBOI and on track 112° to HONLU and hold.

ASOS 119.025	CLEVELAND CENTER 126.725 291.65	UNICOM 123.0 (CTAF) 0
------------------------	---	---------------------------------



ELEV 1817 TDZE 1817

VGSI and RNAV glidepath not coincident (VGSI Angle 3.00/TCH 28).

JIMTU	ULUKE	PLEAZ	DUBOI	HONLU
4000	4000	3600	tr 112°	△
GP 3.00° TCH 45				
5 NM	2.6 NM	3.7 NM	0.6 NM	1.2 NM

*2420

*1.2 NM to RW07

RW07

CATEGORY	A	B	C	D
LPV DA	2017-3/4		200 (200-3/4)	
LNAV/VNAV DA	2160-1		343 (400-1)	
LNAV MDA	2240-1	423 (500-1)	2240-1 1/4	423 (500-1 1/4)
CIRCLING	2320-1 503 (600-1)	2360-1 543 (600-1)	2380-1 1/2 563 (600-1 1/2)	2620-2 1/2 803 (900-2 1/2)

REIL Rwy 7

HIRL Rwy 7-25