

WAAS
CH **97407**
W25A

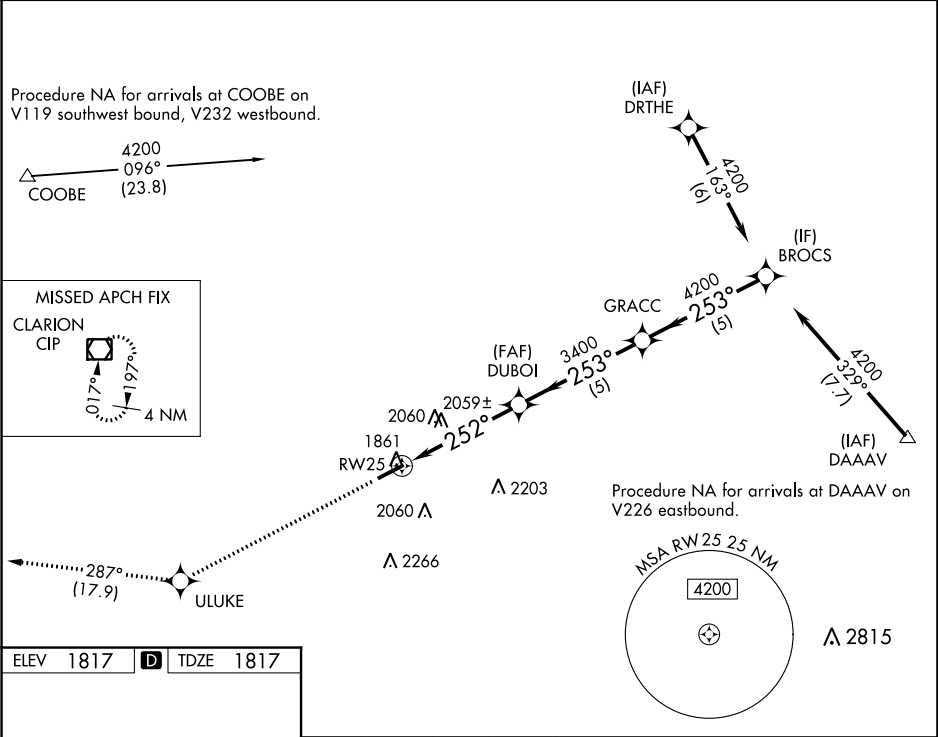
APP CRS
252°

Rwy Idg
TDZE **1817**
Apt Elev **1817**

RNAV (GPS) RWY 25

DUBOIS RGNL (DUJ)

RNP APCH.		MALSR	MISSED APPROACH: Climb to 4000 direct ULUKE and on track 287° to CIP VOR/DME and hold.
<div><div><div><div></div><div></div></div><div>For uncompensated Baro-VNAV systems, LNAV/VNAV NA below -20°C or above 54°C. For inop ALS increase LNAV Cat C/D visibility to 1 3⁄8 SM.</div></div></div>		<div><div></div><div></div></div>	
ASOS 119.025	CLEVELAND CENTER 126.725 291.65	UNICOM 123.0 (CTAF) 0	



ELEV 1817 **D** TDZE 1817

252° to RW25

4000

ULUKE

tr 287°

CIP

1861

5503 X 100

*LNAV only.		RW25		DUBOI	GRACC	BROCS	
		*1.4 NM to RW25		3400	253° 4200	253° 4200	GP 3.00° TCH 57
		1.4		3.3 NM	5 NM	5 NM	
CATEGORY	A	B	C	D			
LPV DA	2017-1⁄2		200 (200-1⁄2)				
LNAV/VNAV DA	2209-3⁄4		392 (400-3⁄4)				
LNAV MDA	2320-1⁄2 503 (600-1⁄2)		2320-1 503 (600-1)				
C CIRCLING	2320-1 503 (600-1)	2360-1 543 (600-1)	2380-1 563 (600-1 1⁄2)	2620-2 1⁄2 803 (900-2 1⁄2)			

REIL Rwy 7 0

HIRL Rwy 7-25 0