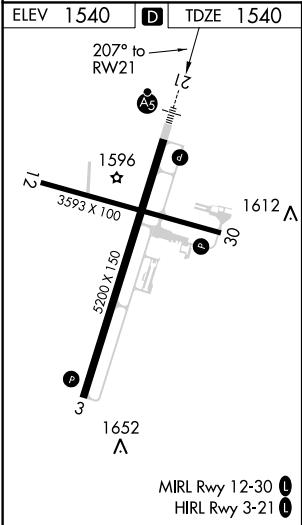
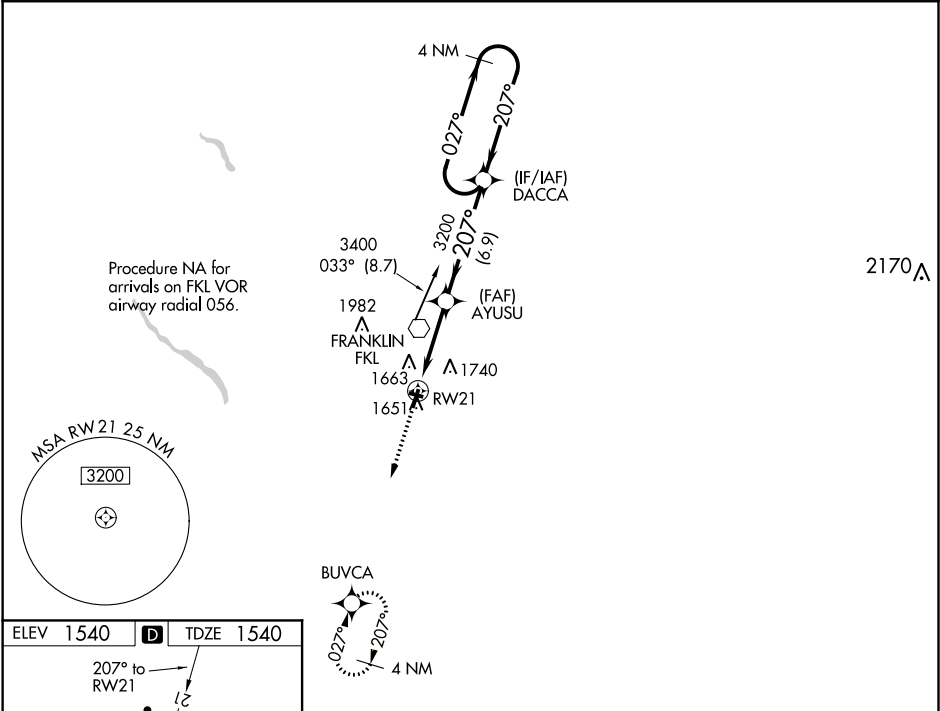


WAAS CH 77501 W21A	APP CRS 207°	Rwy Idg 5200 TDZE 1540 Apt Elev 1540
--	------------------------	---

RNAV (GPS) RWY 21
VENANGO RGNL (F'KL)

RNP APCH.			MALSRL	MISSED APPROACH: Climb to 3400 direct BUVCA and hold.
For uncompensated Baro-VNAV systems, LNAV/VNAV NA below -18°C (0°F) or above 45°C (114°F). Circling Rwy 12 NA at night. For inop ALS, increase LPV all Cats visibility to ¾ SM and LNAV Cats C/D visibility to 1 SM.				
AWOS-3PT 118.175	YOUNGSTOWN APP CON ★ 126.25 322.3	CLNC DEL 126.25	UNICOM 122.7 (CTAF) 0	



3400

↑

BUVCA

4 NM

Holding Pattern

DACCA

027° →

← 207°

3400

* LNAV only.

AYUSU

3200

* 1 NM TO RW21

3200

GP 3.00°

TCH 55

RW21

1 NM

4 NM

6.9 NM

CATEGORY	A		B		C		D	
LPV DA	1803-½ 263 (300-½)							
LNAV/VNAV DA	1901-¾ 361 (400-¾)							
LNAV MDA	1900-½ 360 (400-½)				1900-⅝ 360 (400-⅝)			
CIRCLING	1960-1¼ 420 (500-1¼)		2000-1¼ 460 (500-1¼)		2000-1½ 460 (500-1½)		2100-2 560 (600-2)	