

WAAS CH <b>72919</b> <b>W14A</b>	APP CRS <b>145°</b>	Rwy Idg TDZE Apt Elev	<b>6306</b> <b>2119</b> <b>2143</b>
--	------------------------	-----------------------------	---

RNAV (GPS) RWY 14

BRADFORD RGNL (BFD)

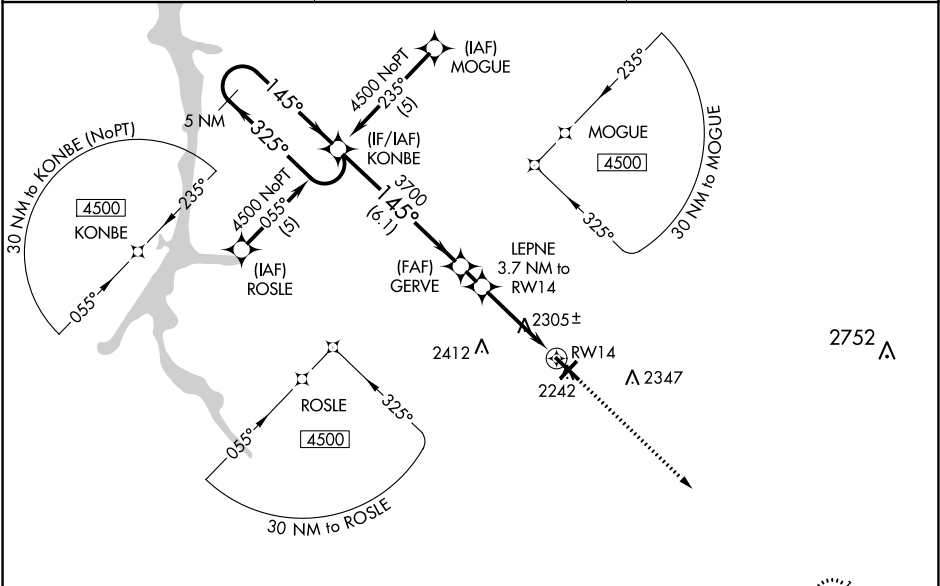
⚠

For uncompensated Baro-VNAV systems, LNAV/VNAV NA below -19°C (-2°F) or above 53°C (129°F). Baro-VNAV and VDP NA when using St. Marys altimeter setting. DME/DME RNP-0.3 NA. Helicopter visibility reduction below ¾ SM NA. When local altimeter setting not received, use St. Marys altimeter setting: Increase LPV DA to 2454 feet and LNAV/VNAV DA to 2602 feet and all MDA 100 feet; increase LPV all Cats visibility ½ mile and LNAV/VNAV all Cats visibility and LNAV Cats C/D visibility ¼ mile; increase Circling Cat C visibility ½ mile.

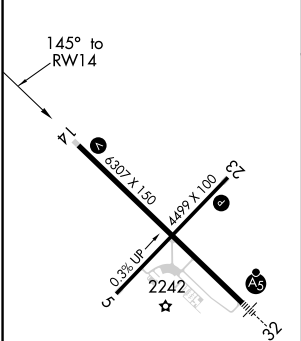
MISSED APPROACH:

Climb to 4500 direct NIMEE and hold.

ASOS <b>133.825</b>	CLEVELAND CENTER <b>124.325 353.85</b>	UNICOM <b>123.075 (CTAF) 0</b>
------------------------	---	-----------------------------------



ELEV 2143	D	TDZE 2119
-----------	---	-----------



MIRL Rwy 5-23 0  
HIRL Rwy 14-32 0  
REIL Rws 5, 14 and 23 0

5 NM Holding Pattern		VGSi and RNAV glidepath not coincident (VGSi Angle 3.00/TCH 42).			4500	NIMEE
KONBE		GERVE			*LNNAV only.	
4500		3700		3700		*1.3 NM to RW14
GP 3.00° TCH 55		*3340		RW14		
		6.1 NM		1.1 NM		2.4 NM
				1.3 NM		
CATEGORY	A	B	C	D		
LPV DA	2369-1		250 (300-1)			
LNAV/ VNAV DA	2517-1¾		398 (400-1¾)			
LNAV MDA	2560-1 441 (500-1)		2560-1¾ 441 (500-1¾)			
CIRCLING	2620-1 477 (500-1)		2620-1½ 477 (500-1½)		2700-2 557 (600-2)	