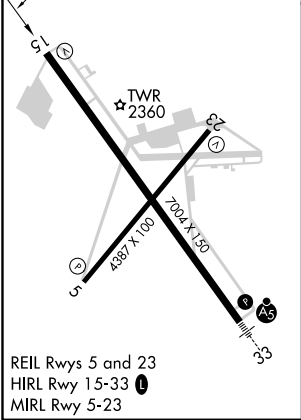
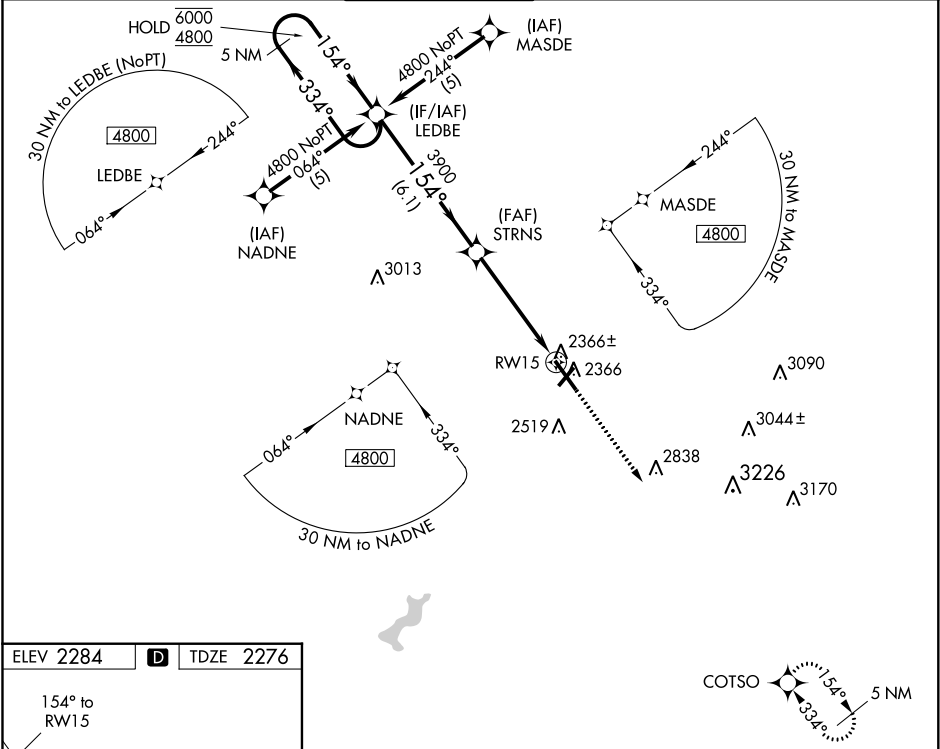


WAAS CH 53513 W15A	APP CRS 154°	Rwy Idg TDZE 2276 Apt Elev 2284
--	------------------------	---

RNAV (GPS) RWY 15

JOHN MURTHA JOHNSTOWN-CAMBRIA COUNTY (JST)

RNP APCH.			MISSED APPROACH: Climb to 4900 direct COTSO and hold.		
<div><div><div></div><div></div></div></div>	For uncompensated Baro-VNAV systems, LNAV/VNAV NA below -19°C or above 54°C.				
ATIS 118.325	JOHNSTOWN APP CON ★ 121.2 299.2	JOHNSTOWN TOWER ★ 125.75 (CTAF) 0	GND CON 121.6	CLNC DEL 126.85 235.775	UNICOM 122.95



5 NM Holding Pattern		LEDGE		4900		COTSO	
6000 ← 334° 4800 → 154°		STRNS		3900		*LNAV only	
GP 3.00° TCH 52		3900		*1.1 NM to RW15		RW15	
		6.1 NM		3.8 NM		1.1	
CATEGORY	A		B		C		D
LPV DA			2526-¾		250 (300-¾)		
LNAV/ VNAV	DA		2595-1		319 (400-1)		
LNAV MDA	2680-1		404 (400-1)		2680-1½ 404 (400-1½)		2680-1¼ 404 (400-1¼)
CIRCLING	2700-1 416 (500-1)		2880-1 596 (600-1)		2880-1½ 596 (600-1½)		3000-2¼ 716 (800-2¼)