

(LILLI4.LILLI) 20086

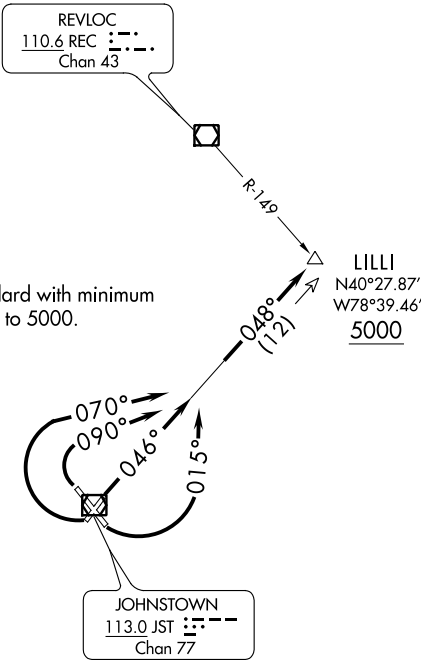
LILLI FOUR DEPARTURE

JOHN MURTHA JOHNSTOWN-CAMBRIA COUNTY (JST)
AL-898 (FAA) JOHNSTOWN, PENNSYLVANIA

ATIS 118.325
CLNC DEL
126.85 235.775
GND CON
121.6
JOHNSTOWN TOWER ★
125.75 (CTAF)
JOHNSTOWN DEP CON ★
121.2 299.2

TOP ALTITUDE:
ASSIGNED BY ATC

TAKEOFF MINIMUMS:
Rwys 5, 15, 23, 33: Standard with minimum
ATC climb of 235' per NM to 5000.



NOTE: During VFR conditions
watch for opposing traffic
on JST R-048.

NOTE: Chart not to scale.



DEPARTURE ROUTE DESCRIPTION

TAKEOFF RUNWAY 5: Climb heading 046° to intercept JST R-048, Thence....
TAKEOFF RUNWAY 15: Turn left heading 015° to intercept JST R-048, Thence....
TAKEOFF RUNWAY 23: Turn right heading 070° to intercept JST R-048, Thence....
TAKEOFF RUNWAY 33: Turn right heading 090° to intercept JST R-048, Thence....
....via JST R-048 to cross LILLI INT at or above 5000 thence via (assigned route).

LILLI FOUR DEPARTURE

(LILLI4.LILLI) 21JUL16

JOHN MURTHA JOHNSTOWN-CAMBRIA COUNTY (JST)
JOHNSTOWN, PENNSYLVANIA

NE-4, 31 DEC 2020 to 28 JAN 2021

NE-4, 31 DEC 2020 to 28 JAN 2021