

| | | |
|--|------------------------|---|
| WAAS CH 69213 W22A | APP CRS 224° | Rwy Idg TDZE 933 Apt Elev 962 |
|--|------------------------|---|

RNAV (GPS) RWY 22

WILKES-BARRE/SCRANTON INTL (AVP)

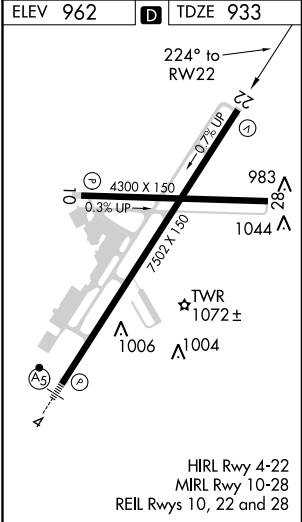
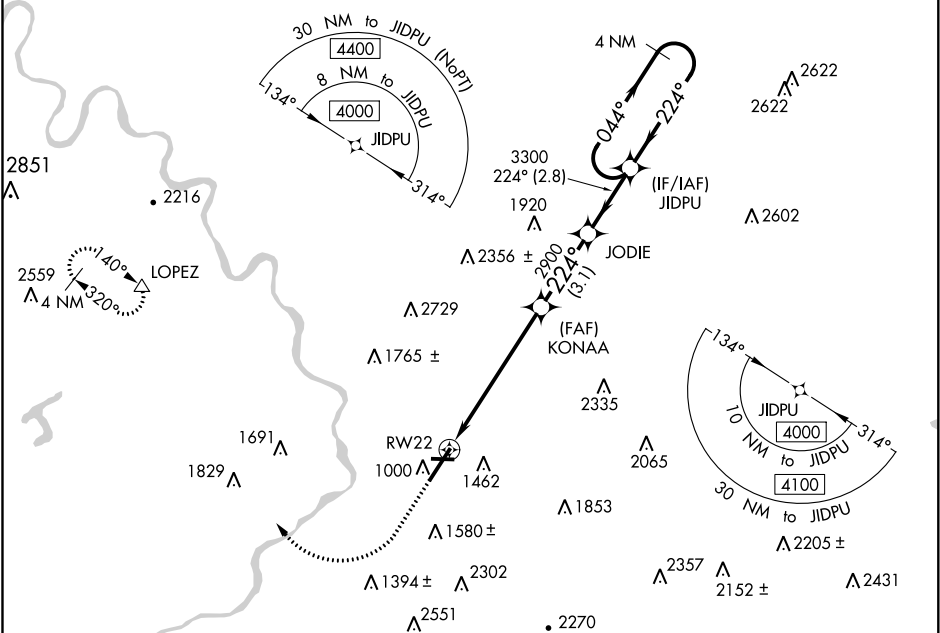
▼

▲

Night landing: Rwy 10, 28 NA. For uncompensated Baro-VNAV systems, LNAV/VNAV NA below -17°C (2°F) or above 54°C (130°F). When local altimeter setting not received, procedure NA. Circling NA for Cats C and D southeast of Rwy 4-22. DME/DME RNP-0.3 NA.

MISSED APPROACH: Climb to 1900 then climbing right turn to 4000 direct LOPEZ and hold.

| | | | |
|----------------------|---|--|-------------------------|
| ATIS 111.6 | WILKES-BARRE APP CON 120.95 256.7 (280°-100°) 126.3 256.7 (101°-279°) | WILKES-BARRE TOWER 120.1 257.8 | GND CON 121.9 |
|----------------------|---|--|-------------------------|



| | | | | |
|--------------|-------------------------|---------------------------|--|-------------------------|
| 1900 | 4000 | LOPEZ | VGSI and RNAV glidepath not coincident (VGSI Angle 3.00/TCH 54). | 4 NM Holding Pattern |
| *LNAV only. | *1.8 NM to RW22 | KONAA 2900 | JODIE 3300 | JIDPU 4000 |
| 1.8 NM | 4.3 NM | 3.1 NM | 2.8 NM | GP 3.00° TCH 51 |
| CATEGORY | A | B | C | D |
| LPV DA | | 1178/40 | 245 (200-¾) | |
| LNAV/VNAV DA | | 1392-1½ | 459 (500-1½) | |
| LNAV MDA | 1500/55 | 567 (600-1) | 1500-1¾ | 567 (600-1¾) |
| CIRCLING | 1840-1¼ 878 (900-1¼) | 1980-1½ 1018 (1100-1½) | 1980-3 1018 (1100-3) | 2280-3 1318 (1400-3) |