

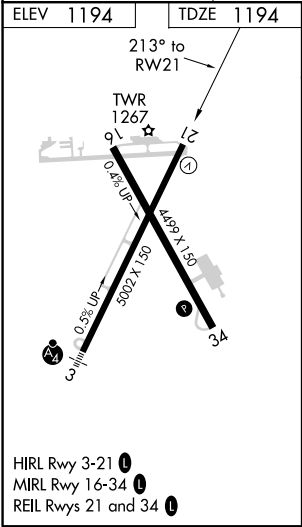
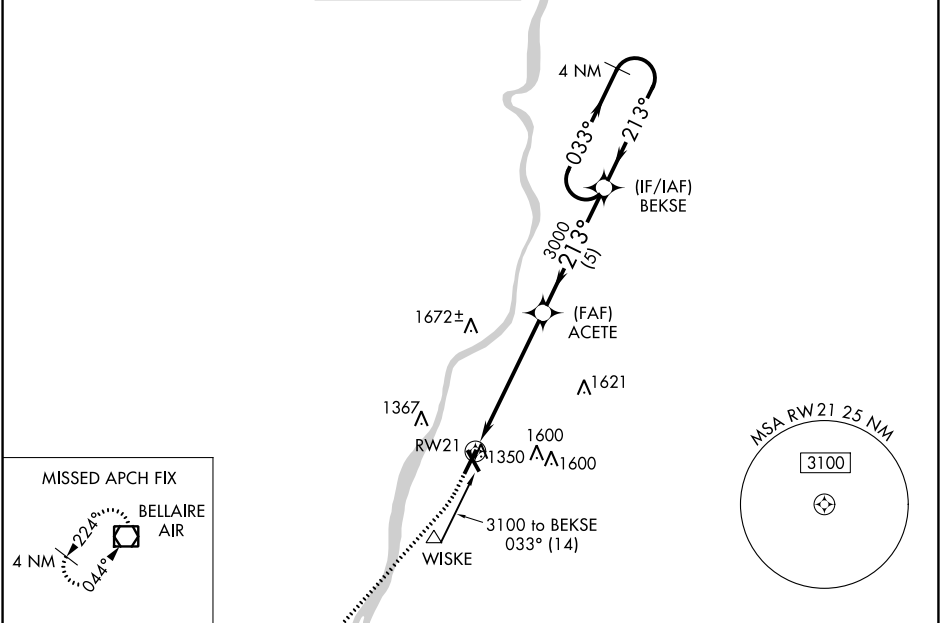
WAAS CH 58240 W21A	APP CRS 213°	Rwy Idg TDZE 1194 Apt Elev 1194	5002 1194 1194
--	------------------------	---	---

RNAV (GPS) RWY 21
WHEELING OHIO COUNTY (H.L.G.)

For uncompensated Baro-VNAV systems, procedure NA below -17°C (2°F) or above 54°C (130°F). Rwy 21 helicopter visibility reduction below 3/4 SM NA. DME/DME RNP-0.3 NA.

MISSED APPROACH: Climb to 1700 then climbing right turn to 3100 direct AIR VOR/DME and hold.

ASOS 127.375	PITTSBURGH APP CON 125.275 285.575	WHEELING TOWER ★ 118.1 (CTAF) 0 257.8	GND CON 121.75	CLNC DEL 125.275 (when twr closed)	UNICOM 122.95
------------------------	--	---	--------------------------	---	-------------------------



<div><div><div><div><div><div></div><div>1700</div></div><div><div></div><div>3100</div></div></div><div><div><div>AIR</div><div></div></div></div></div><div><div><div><div><div></div><div>1.5</div></div><div><div></div><div>4 NM</div></div><div><div></div><div>5 NM</div></div></div><div><div><div>ACETE</div><div>3000</div></div><div><div>BEKSE</div><div>4 NM Holding Pattern</div></div></div><div><div><div><div><div></div><div>033°</div></div><div><div></div><div>213°</div></div></div><div><div><div>3100</div><div>GP 3.00° TCH 42</div></div></div></div></div></div></div></div></div>					
*LNAV only.					
<div><div><div><div><div></div><div>RW21</div></div><div><div></div><div>1.5</div></div></div><div><div><div><div></div><div>213°</div></div><div><div></div><div>3000</div></div></div><div><div><div>ACETE</div><div>3000</div></div><div><div>BEKSE</div><div>4 NM Holding Pattern</div></div></div><div><div><div><div><div></div><div>033°</div></div><div><div></div><div>213°</div></div></div><div><div><div>3100</div><div>GP 3.00° TCH 42</div></div></div></div></div></div></div></div>					
CATEGORY	A		B	C	D
LPV DA	1444-1		250 (300-1)		
LNAV/VNAV DA	1653-1½		459 (500-1½)		
LNAV MDA	1700-1	506 (600-1)		1700-1½	506 (600-1½)
CIRCLING	1720-1 526 (600-1)	1740-1 546 (600-1)	1900-2 706 (800-2)	1920-2¼ 726 (800-2¼)	